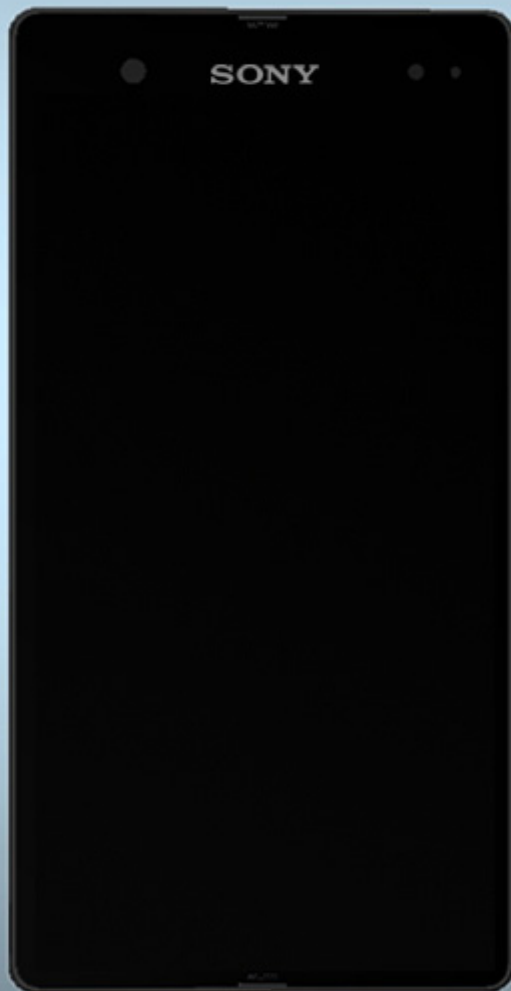


## Repair Movies

- mechanical -



Xperia™ Z  
C6602, C6603, L36h

CONTENTS

1 Movies..... 3

1.1 Disassembly ..... 3

1.2 Reassembly ..... 3

2 Revision History..... 4

To view the embedded repair movies in this document, Acrobat Reader version 8 (or later) and Flash Player version 8 (or later) must be installed on your computer.

For best picture quality, select “Actual size” or “100%” as zoom level in Acrobat Reader. To magnify while keeping an acceptable picture quality, increase the zoom level to 200%.

If the movies appear to be jerky or blurred when viewing on-line, this is probably caused by the connection speed being too slow. In that case, right-click with the mouse on the document name and select Save Target As to download the repair movie document for off-line viewing.

For general information about repair movies, refer to 1220-1333: Generic Repair Manual - mechanical

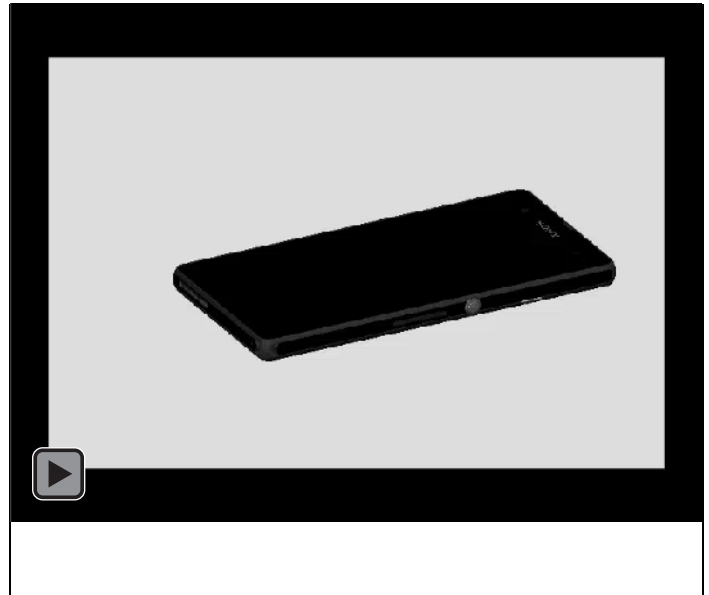
## 1 Movies

### 1.1 Disassembly

#### C6603, C6602, L36h

The Disassembly is done to the following modules:

- SIM Tray
- Back Panel Assy
- Ant Diversity Flex RoW
- Copper Sheet McamB
- Camera 13 MPixel CMOS
- Camera 2.2 MPixel CMOS
- Sheet Battery FPC
- Main PBA
- FPC Assembly Top RoW
- Cover Con Vibrator
- Ant Main Flex RoW
- PBA Sub RoW and Front Assembly

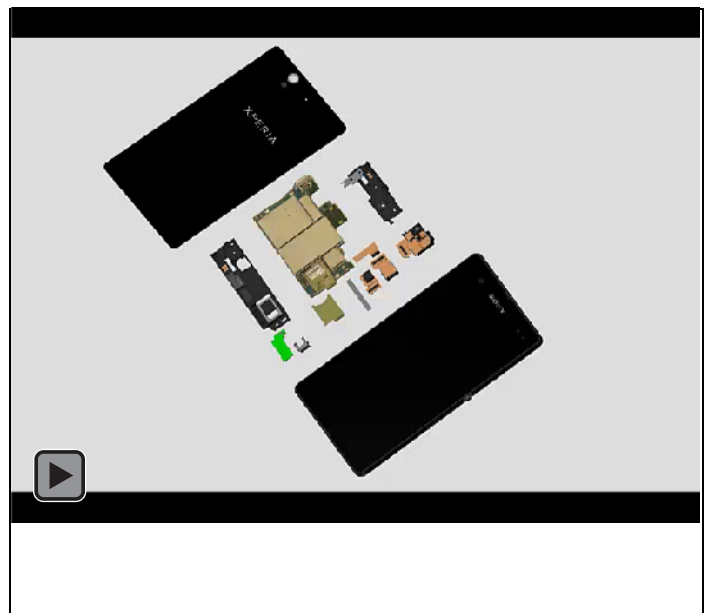


### 1.2 Reassembly

#### C6603, C6602, L36h

The Re-assembly is done to the following modules:

- Front Assembly and PBA Sub RoW
- Ant Main Flex RoW
- Cover Con Vibrator
- FPC Assembly Top RoW
- Main PBA
- Sheet Battery FPC
- Camera 2.2 MPixel CMOS
- Camera 13 MPixel CMOS
- Copper Sheet McamB
- Ant Diversity Flew RoW
- Back Panel Assy
- SIM Tray



## 2 Revision History

Rev.	Date	Changes / Comments
1	2013-02-19	Initial release
2	2013-02-25	Update of quality