

# Lenovo A536

## Service Manual

LENOVO

# Content

1.	How to assemble and disassemble LENOVO A536 .....	3
1.1	The phone disassemble guide.....	3
1.2	The phone assemble guide .....	9
2.	Main board and Sub FPC layout introduction .....	10
2.1	Main board top view.....	10
2.2	Main board bottom view .....	11
3.	Troubleshooting Procedure .....	12
3.1	No boot .....	12
3.2	Touch panel have no effect.....	13
3.3	Charging anomaly.....	14
3.4	Calling receiver sound has poor quality .....	16
3.5	Speaker has no sound.....	17
3.6	LCD has no display.....	18
3.7	Phone crash.....	20
3.8	Key has no effect .....	21
3.9	Communication signal abnormality .....	22
3.10	Calling receiver has no sound .....	23
3.11	Microphone has no effect .....	24
3.12	Display color distortion.....	25
3.13	Speaker tone distortion.....	26
3.14	Speaker tone smaller .....	27
3.15	No charging.....	28
3.16	Camera has no effect .....	29
3.17	Auto shutdown .....	31
3.18	SIM Card has not be detected.....	32

# 1. How to assemble and disassemble LENOVO A536

## 1.1 The phone disassemble guide

### 1) Remove battery cover

Remove battery cover from B cover at the buckle, shown as picture (1) and (2).



(1)



(2)

### 2) Remove screws

Remove the 7 screws as shown below. Use cross head driver to remove the screws.



Screw length to 1 & 2 & 3 & 4 positions are S1.6×L4.1×D2.6×T0.5

Screw length to 4 & 5 & 6 positions are M1.4X2.8

### 3) Remove B cover

Separate B cover from A cover at the buckle, then unclench B cover and A cover with a plectrum alongside the shell gap.



4) Disassemble PCBA

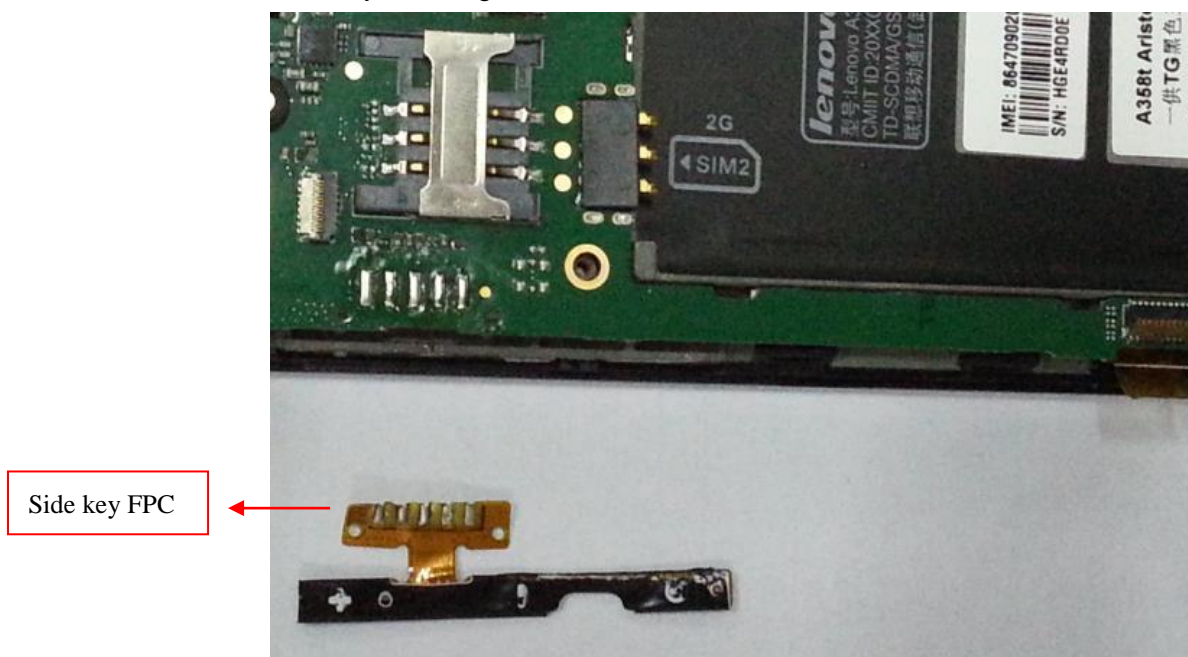
Open the FPC connector of TP, LCD and Camera, and extract all the FPCs.

TP FPC is glued to the main board



Pull off side key FPC from A cover, and remove it from main board with a soldering iron.

Side key FPC is glued to the A cover.



Remove the foam on the main board.

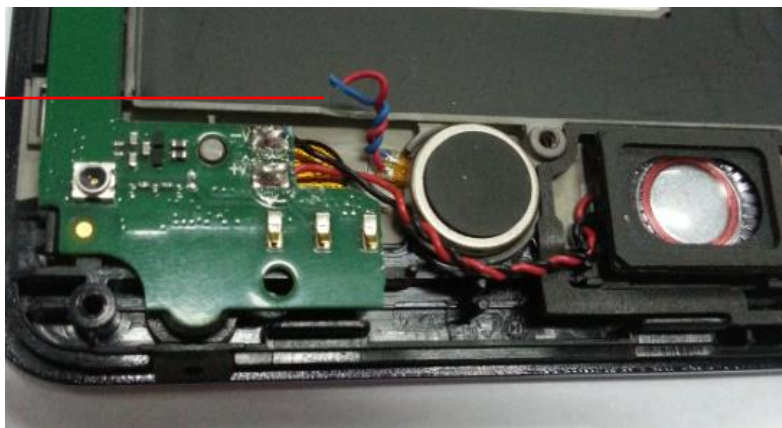


Foam



Remove the vibrator wire from the main board with a soldering iron.

Vibrator wire



Remove the speaker from A cover. The speaker is glued on the A cover, need to pry up with tweezers.

The speaker adhesive comes along with the speaker.

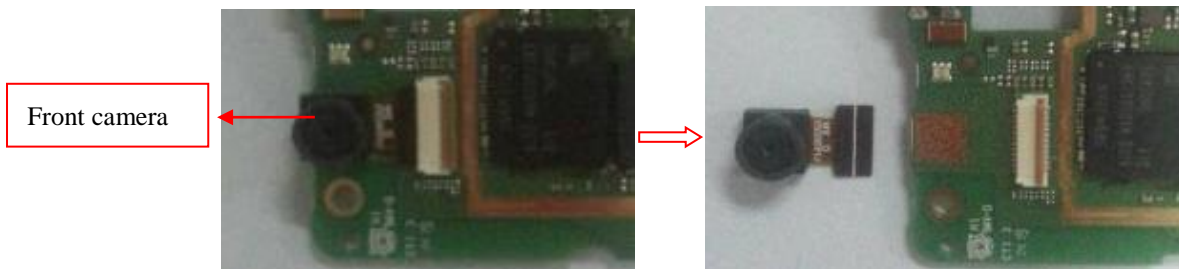
Speaker



Remove the main board from A cover.



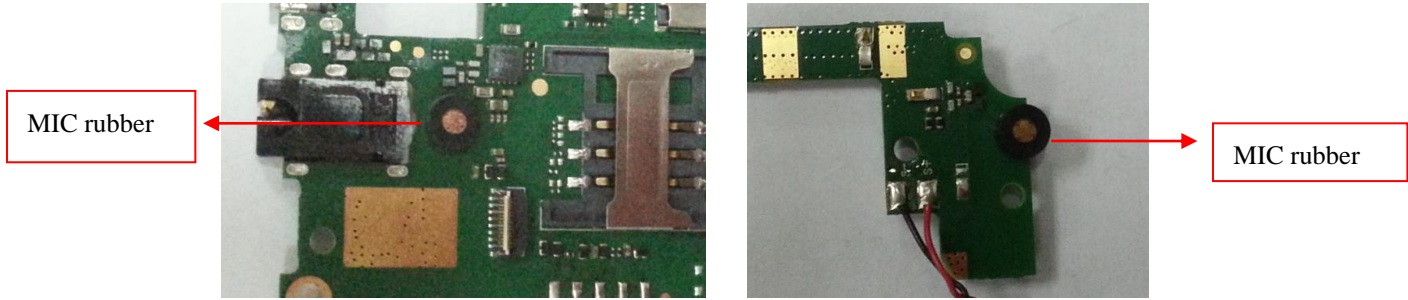
- 5) Remove front camera and MIC rubber  
 Open the front camera FPC connector and extract the FPC.  
 The camera adhesive comes along with the front camera.



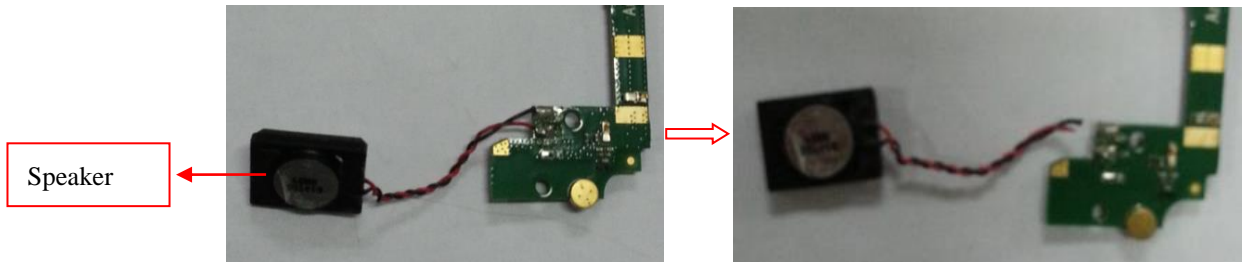
Remove the front camera foam.



Remove two MIC rubbers on the main board. Positions of MIC rubbers are shown below.



- 6) Remove speaker  
Remove speaker from the main board with a soldering iron.



- 7) Remove main camera, receiver and vibrator from A cover.  
Main camera, receiver and vibrator are glued to the A cover.  
The adhesives come along with main camera, receiver and vibrator.





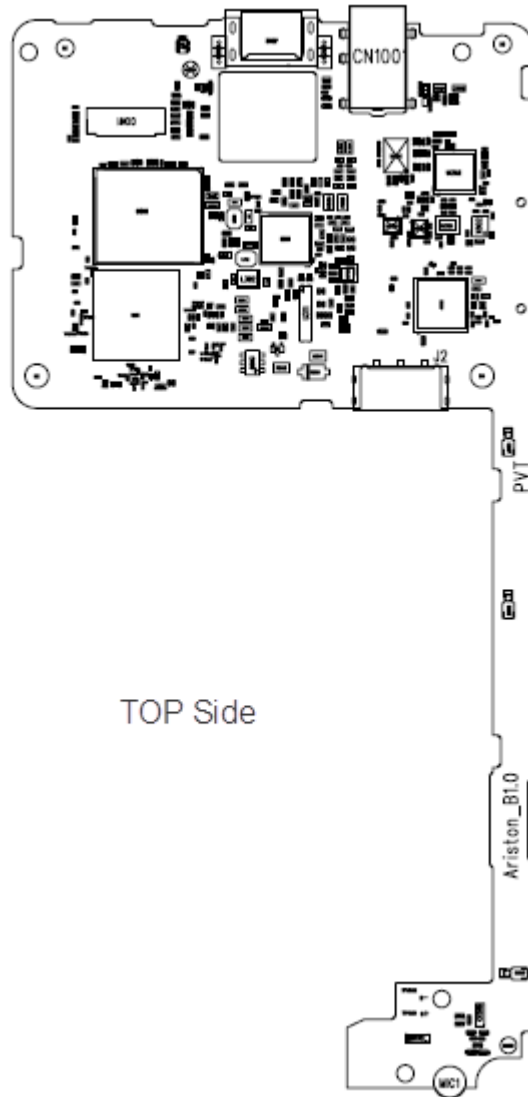


## 1.2 The phone assemble guide

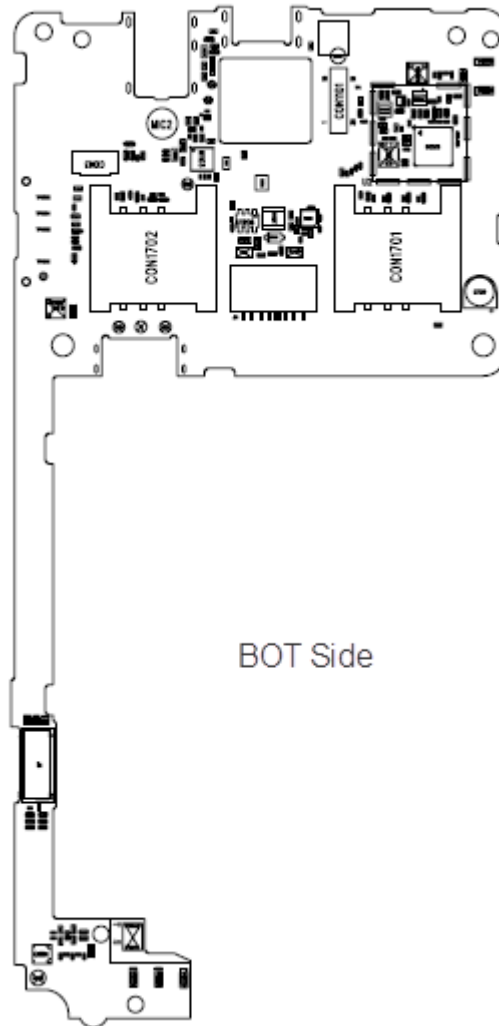
Assemble and disassemble process is opposite

## 2. Main board and Sub FPC layout introduction

### 2.1 Main board top view

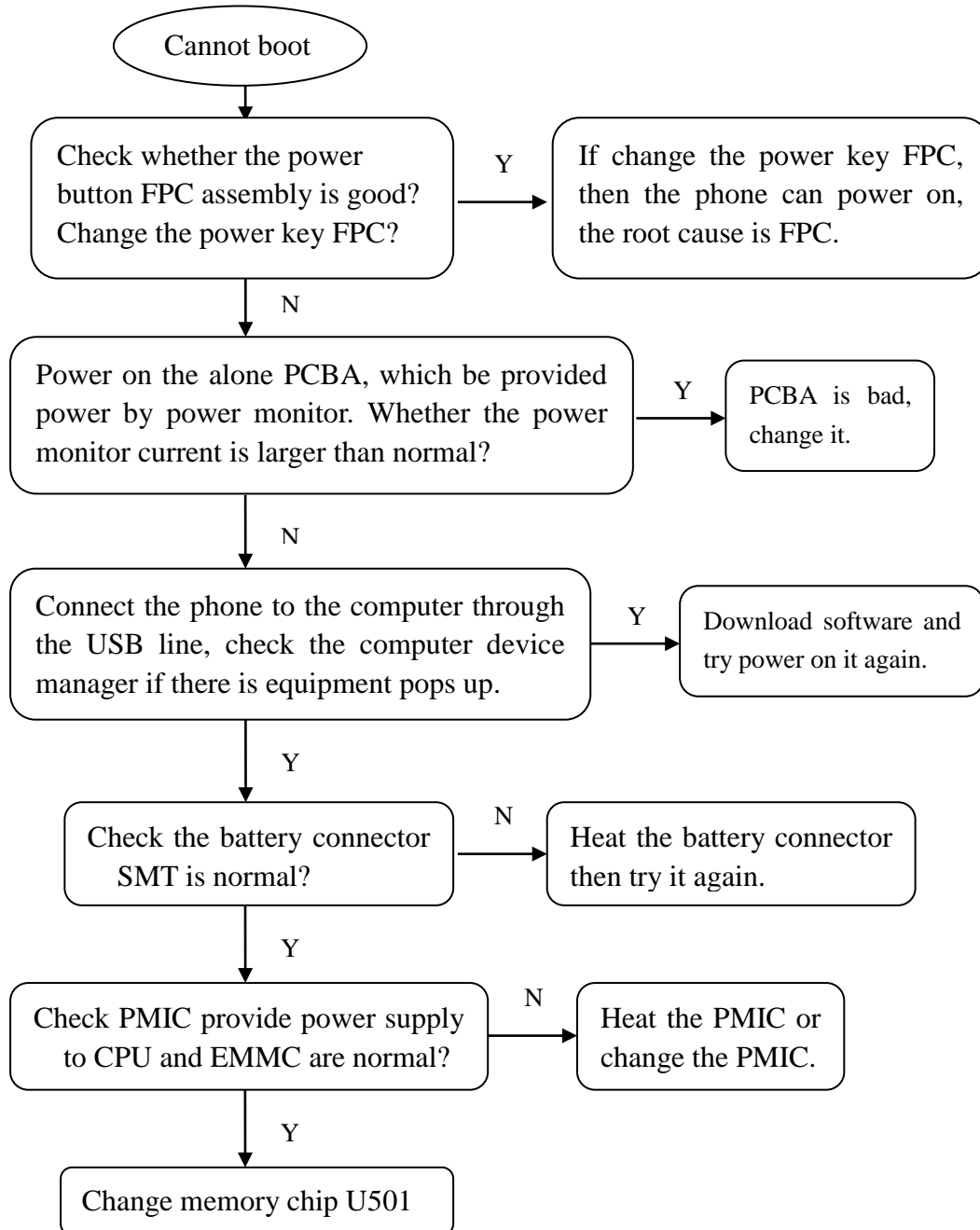


## 2.2 Main board bottom view

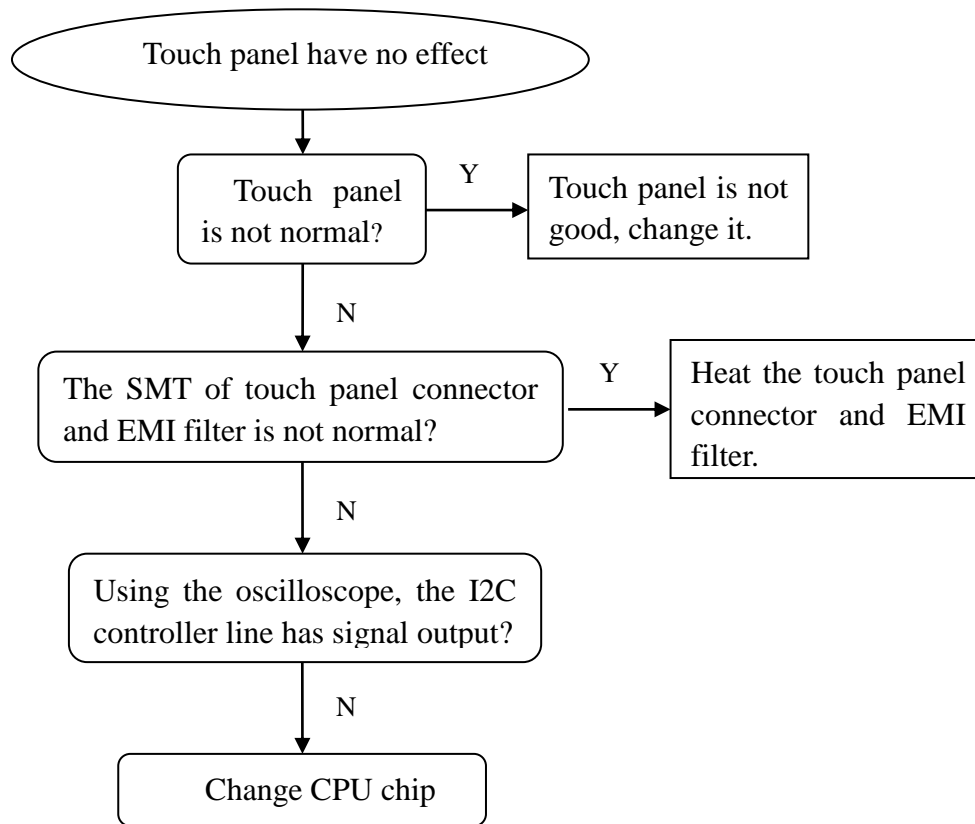


# 3. Troubleshooting Procedure

## 3.1 No boot



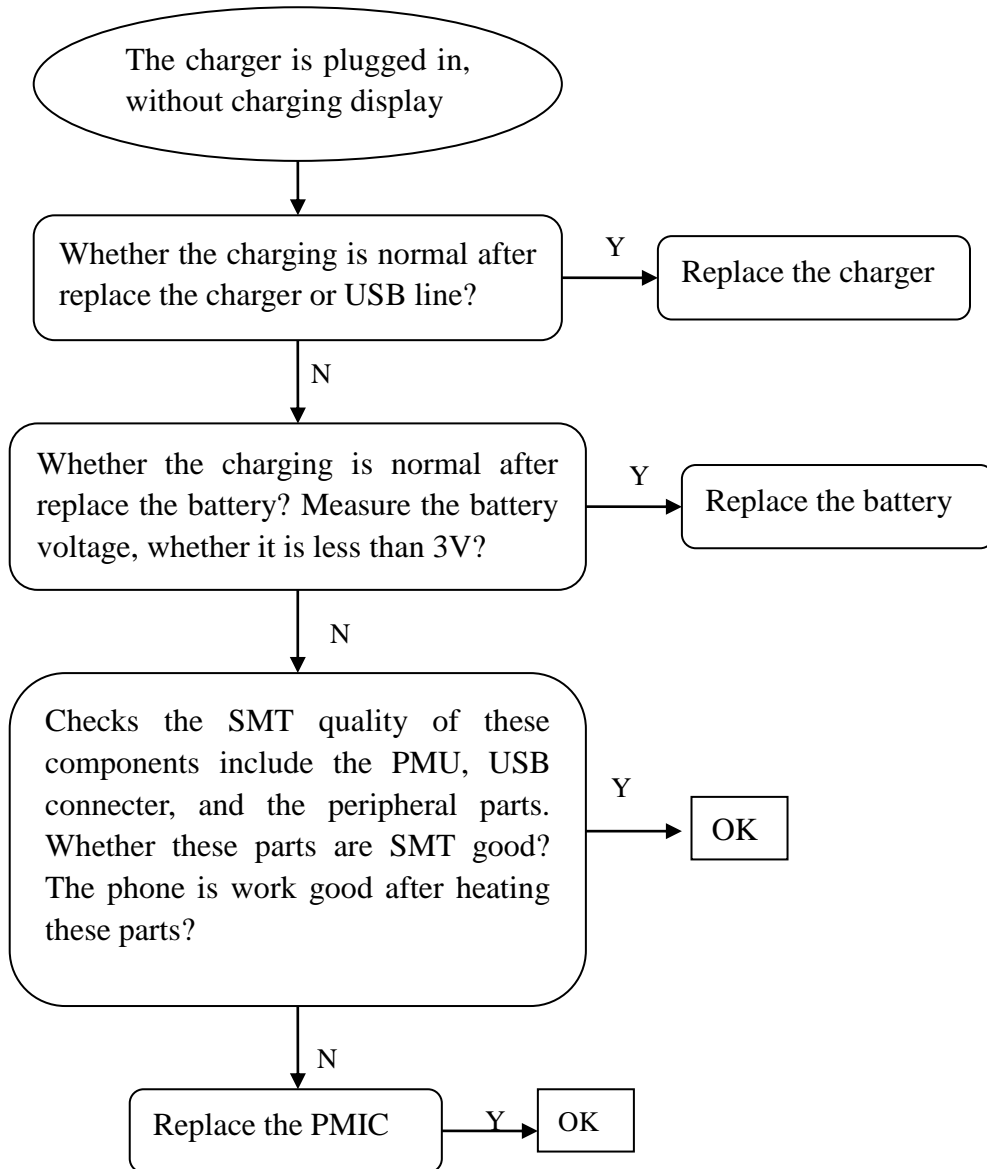
### 3.2 Touch panel have no effect



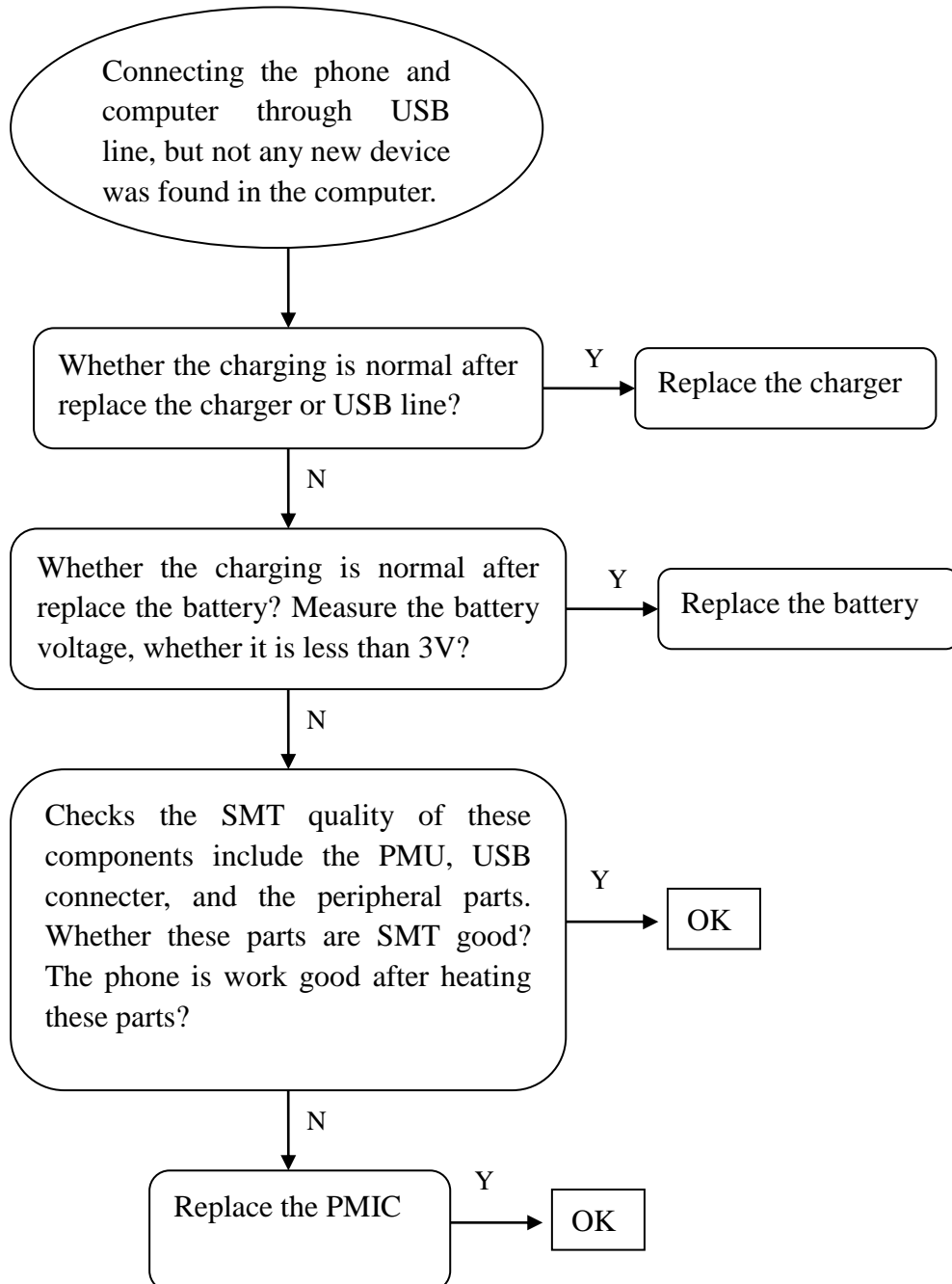


### 3.3 Charging anomaly

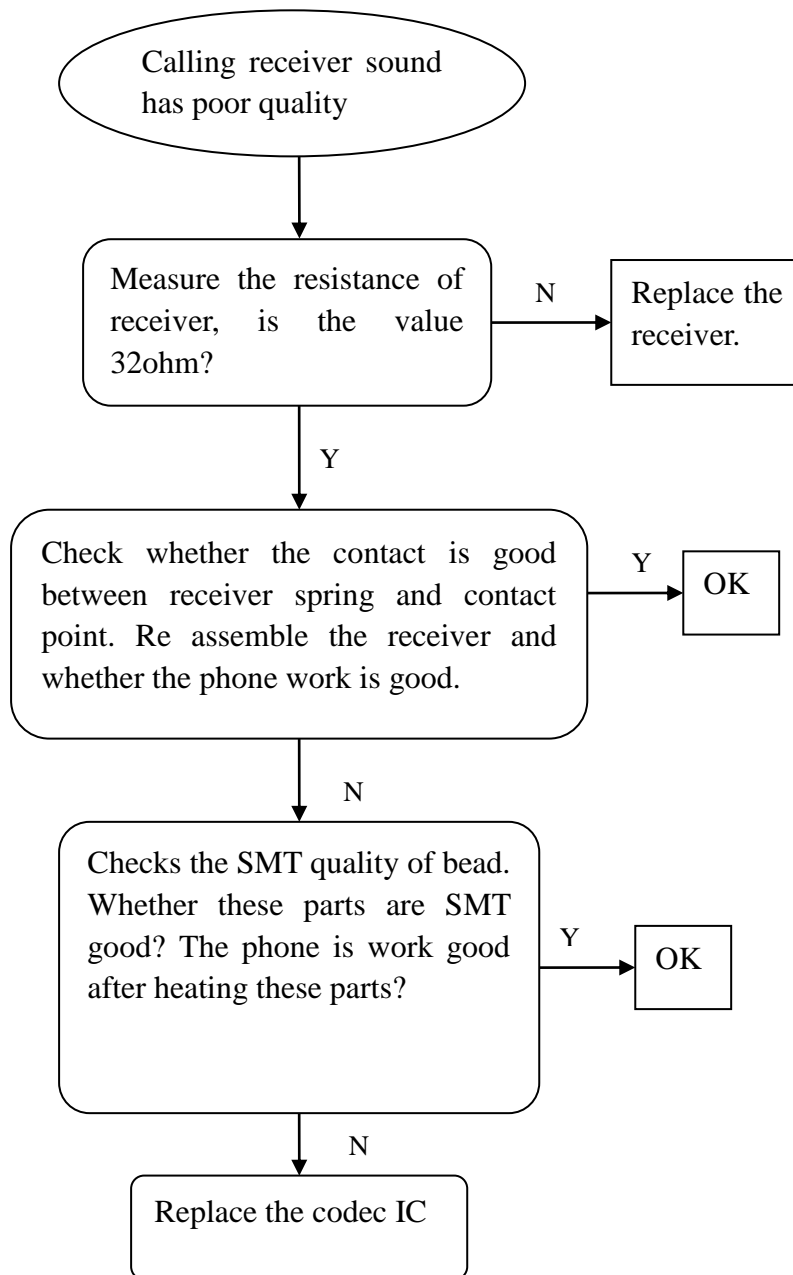
#### 3.3.1 The charger is plugged in, without charging display



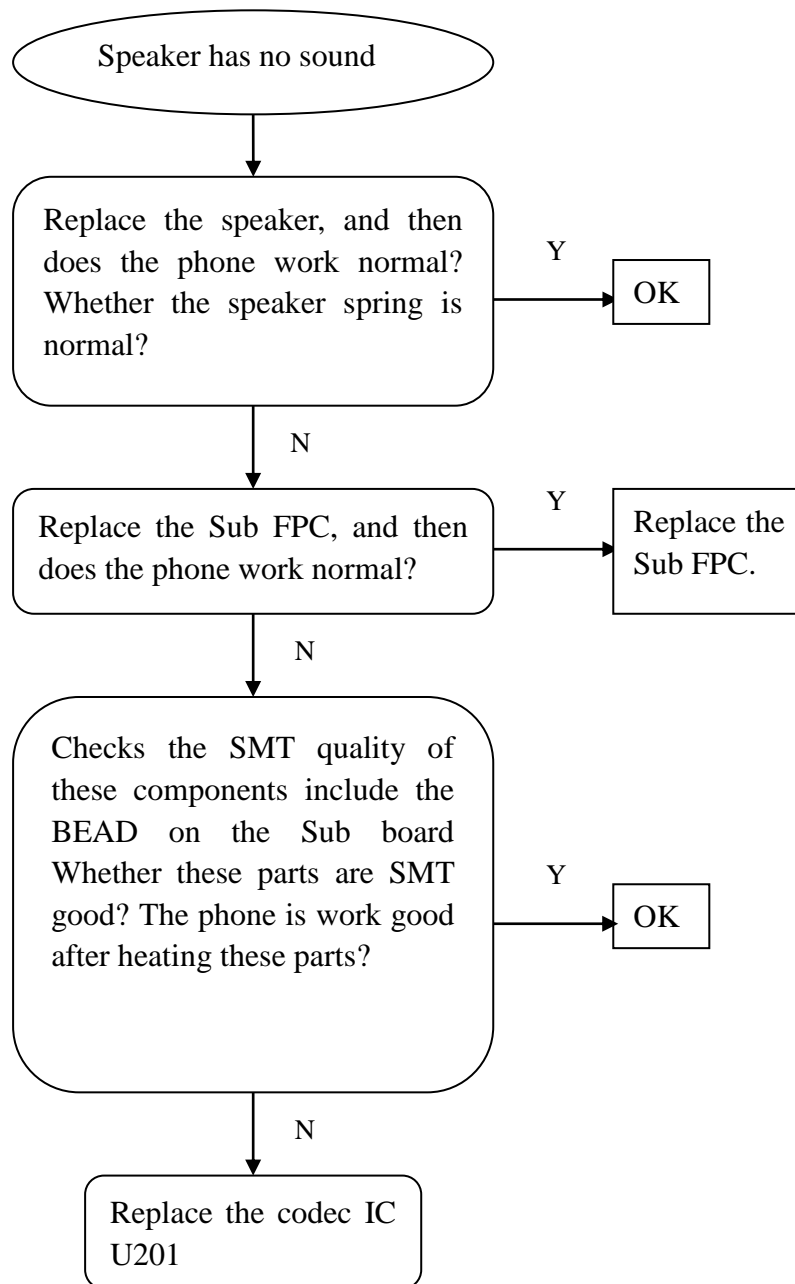
### 3.3.2 Connect the phone and computer through USB line, but not any new device was found in the computer



### 3.4 Calling receiver sound has poor quality

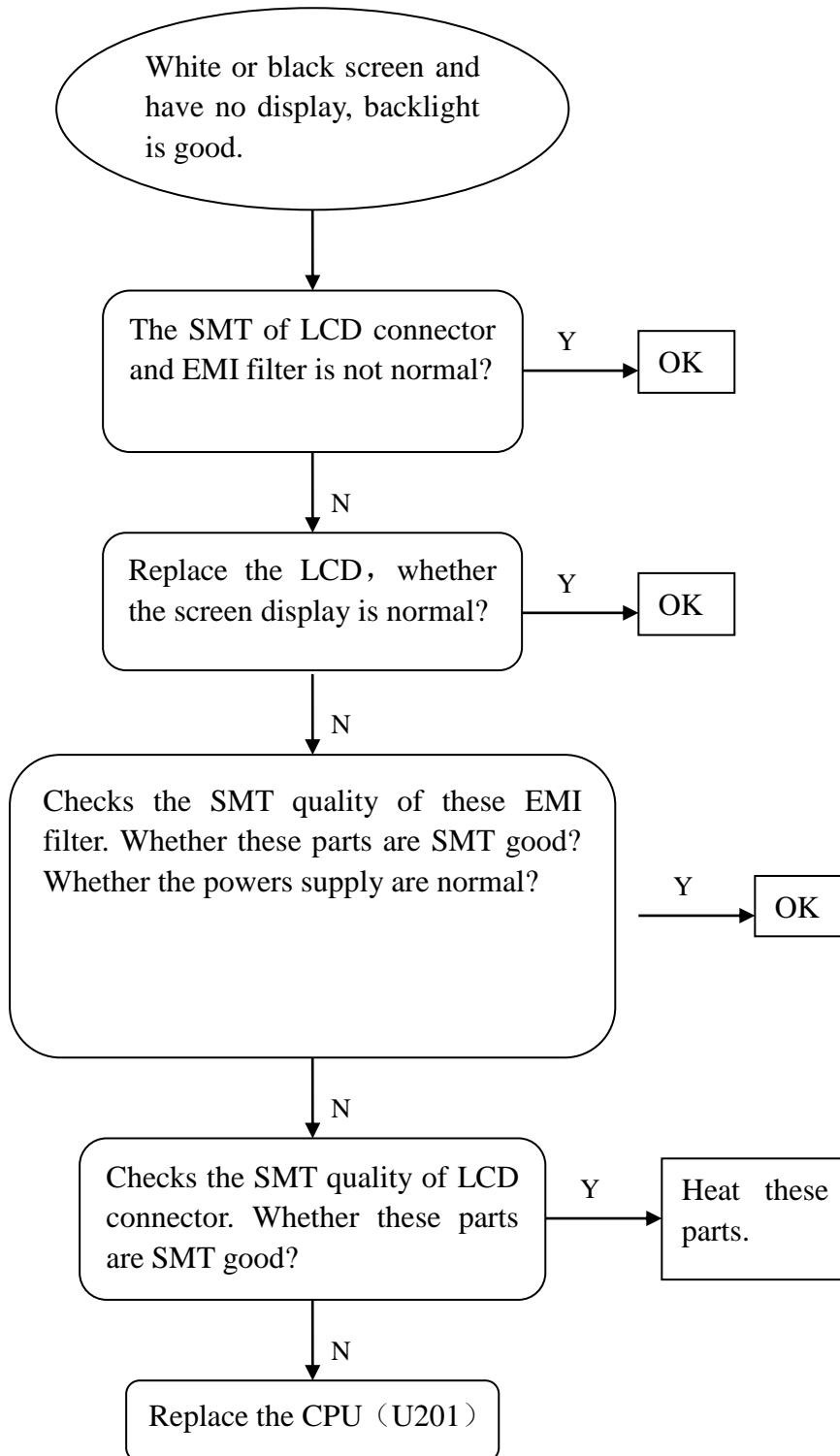


### 3.5 Speaker has no sound



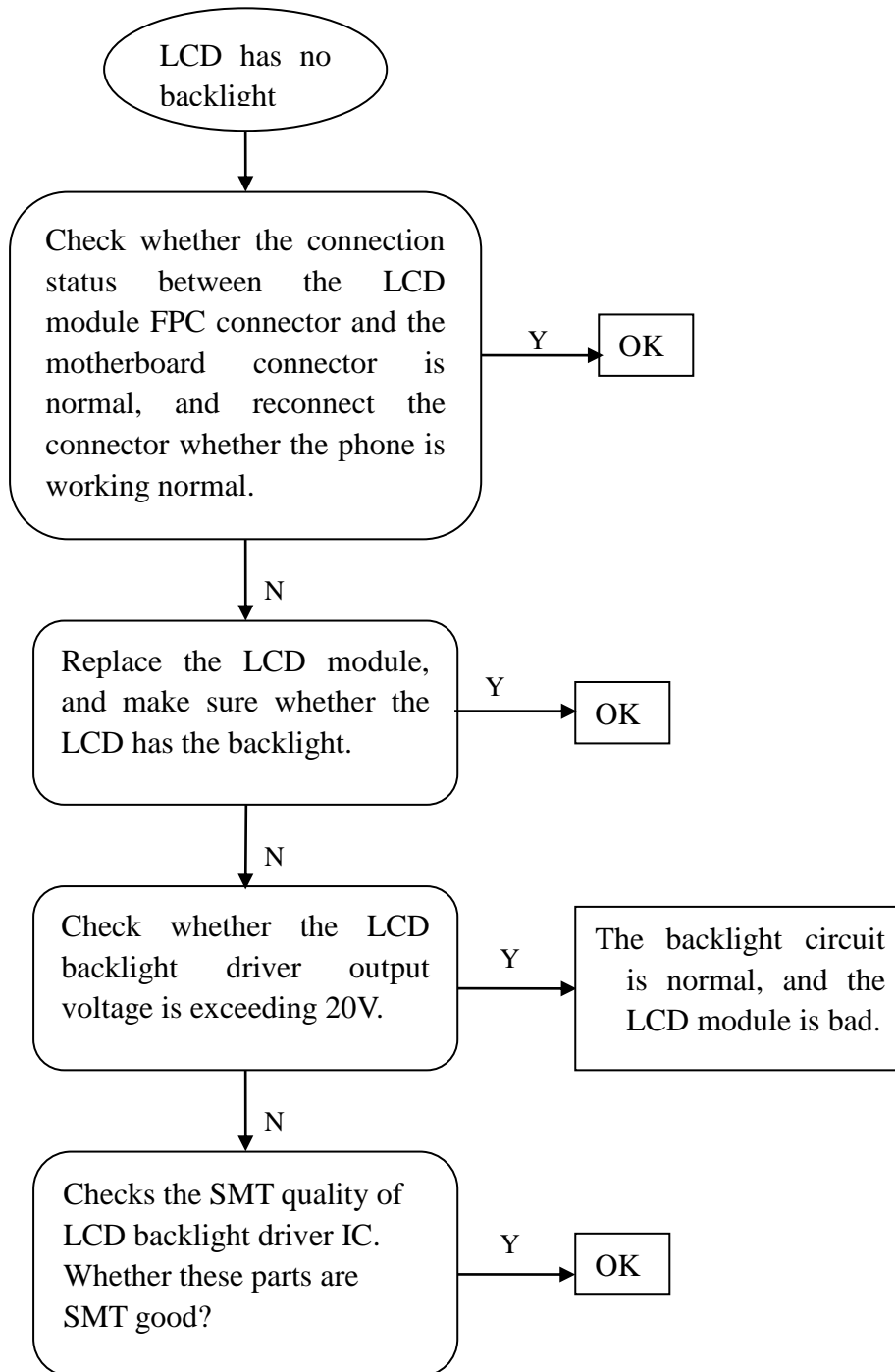
### 3.6 LCD has no display

#### 3.6.1 Power on and no display

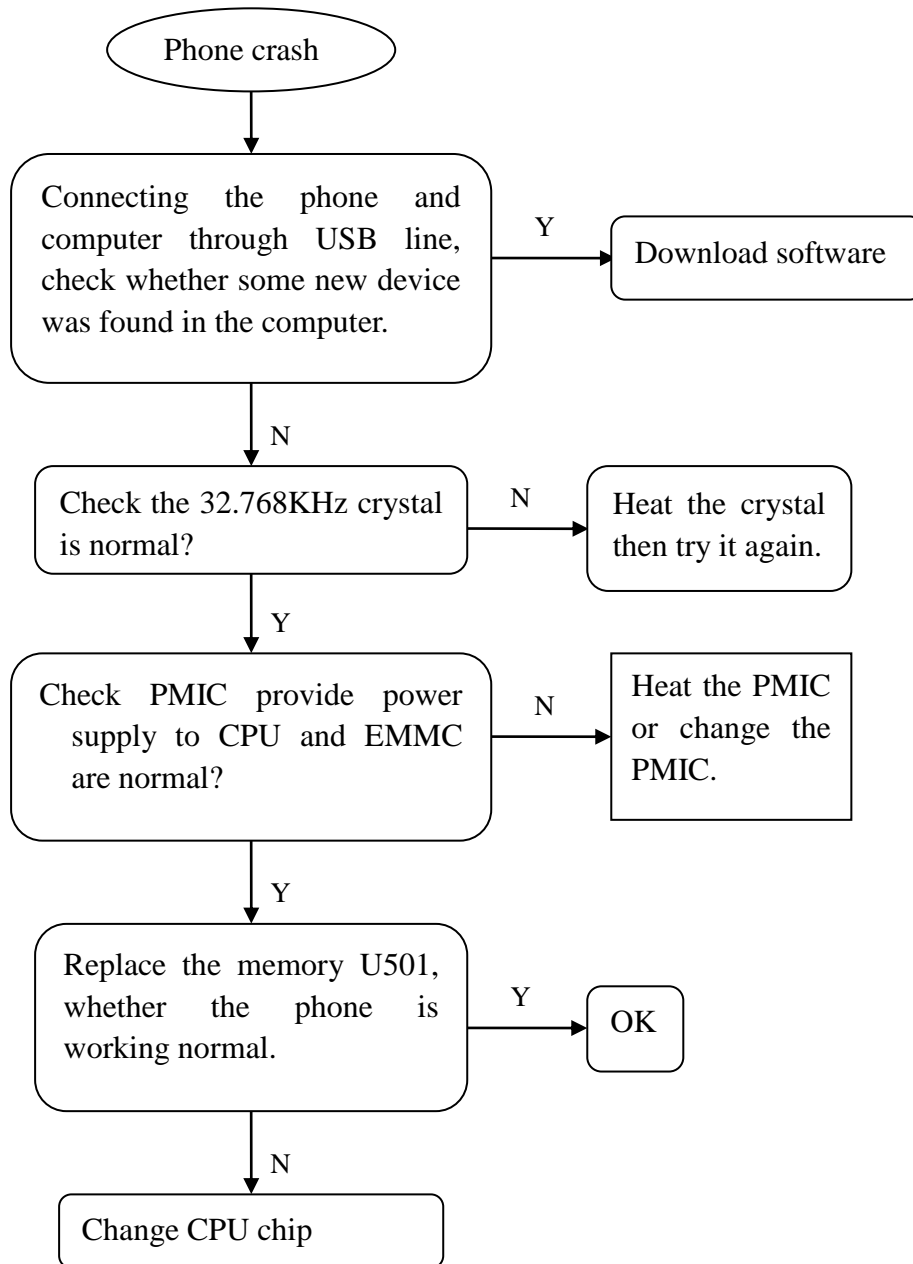




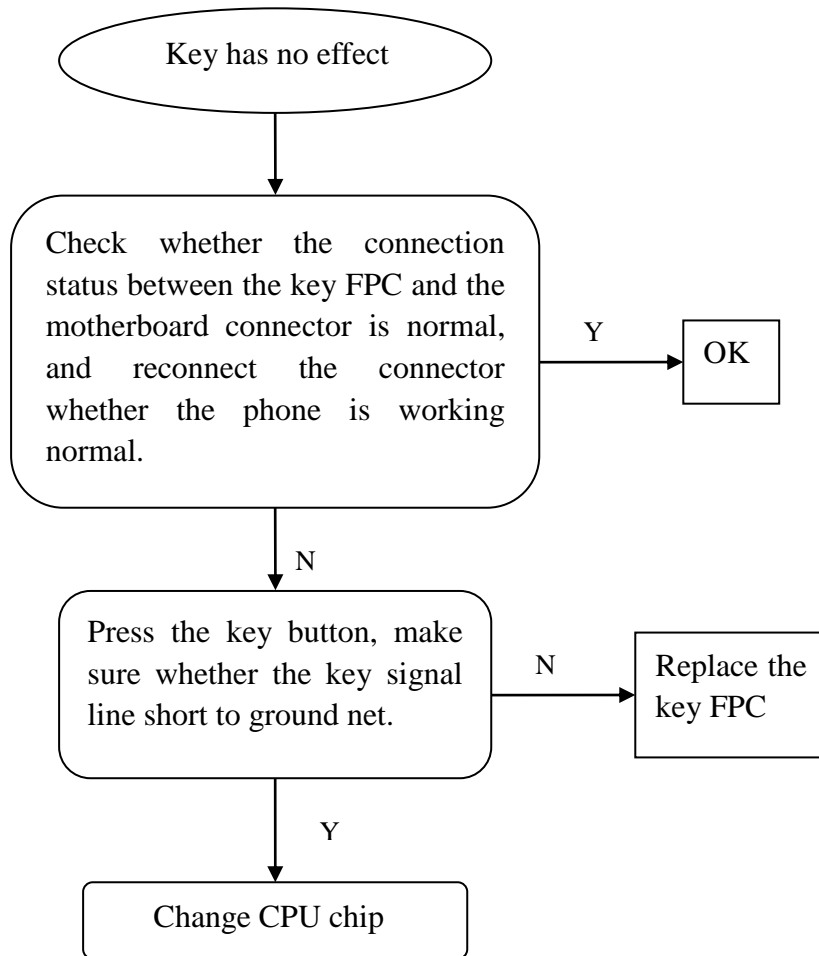
### 3.6.2 LCD has no display



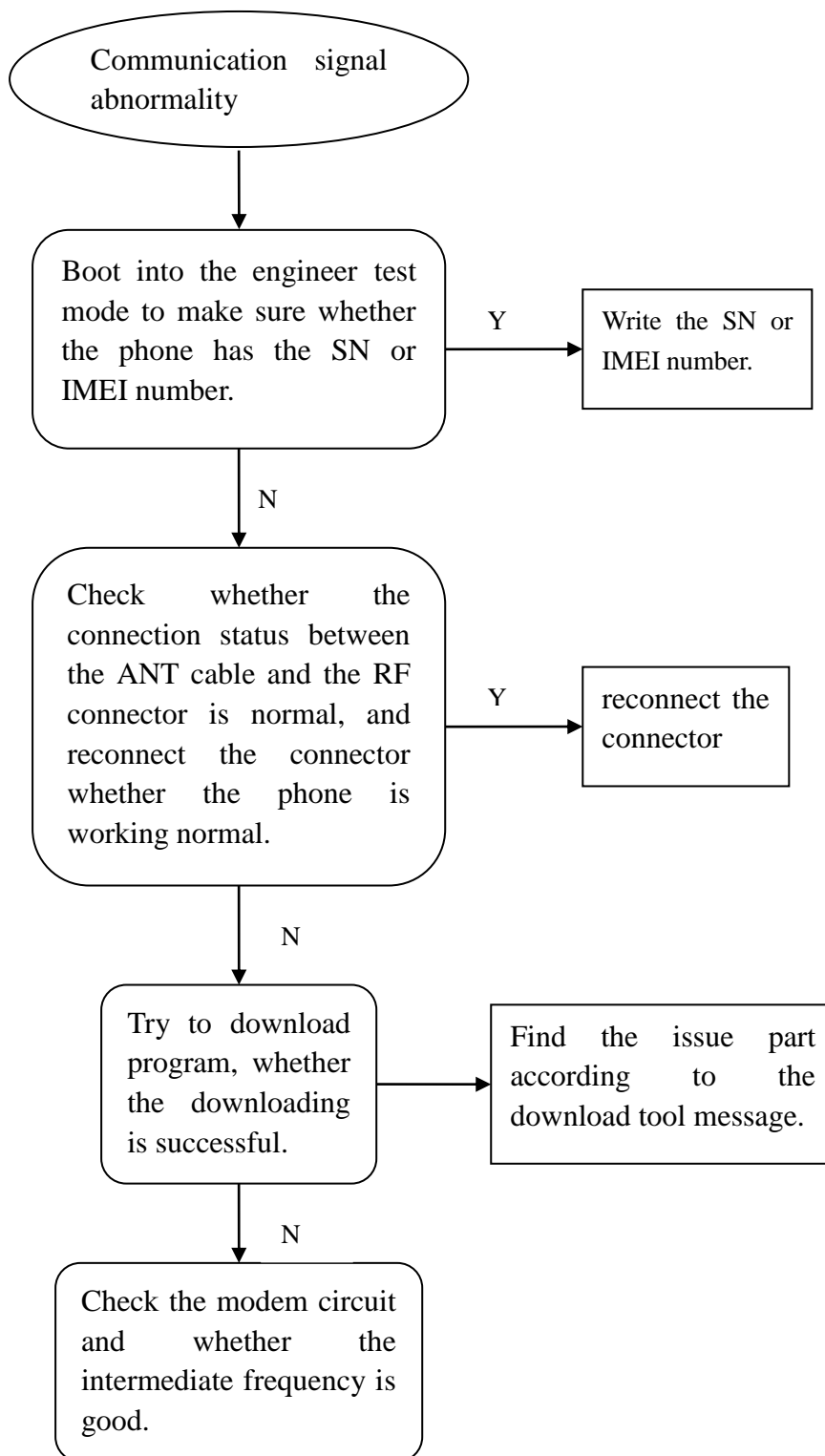
### 3.7 Phone crash



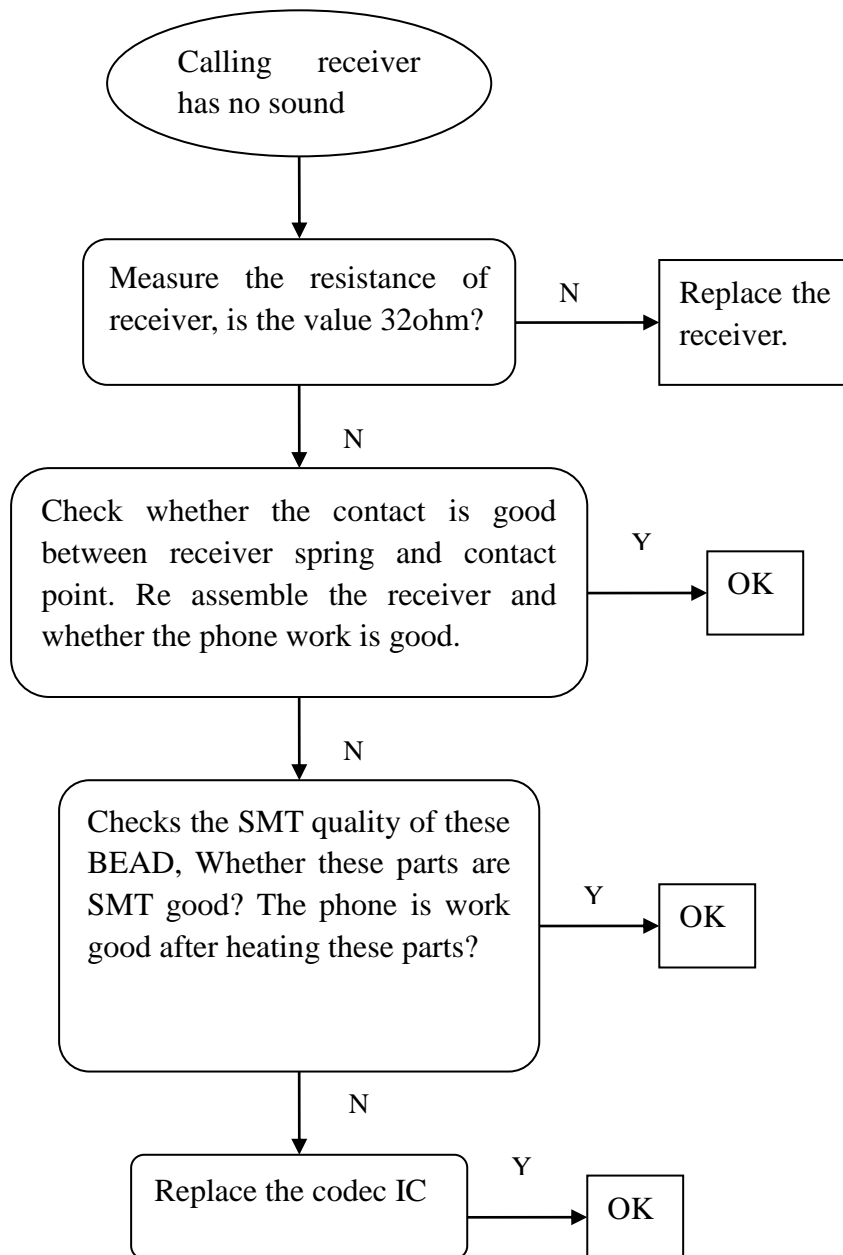
### 3.8 Key has no effect



### 3.9 Communication signal abnormality

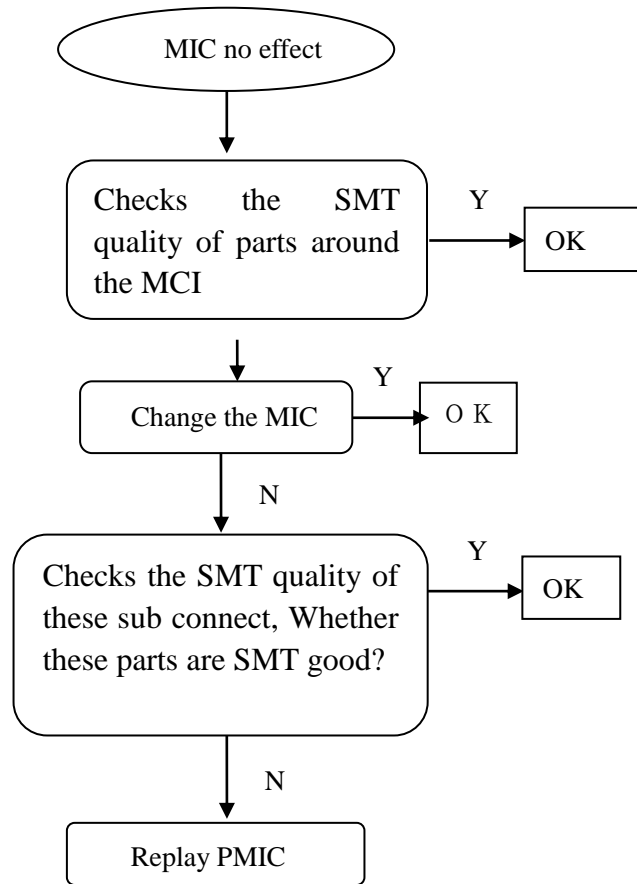


### 3.10 Calling receiver has no sound

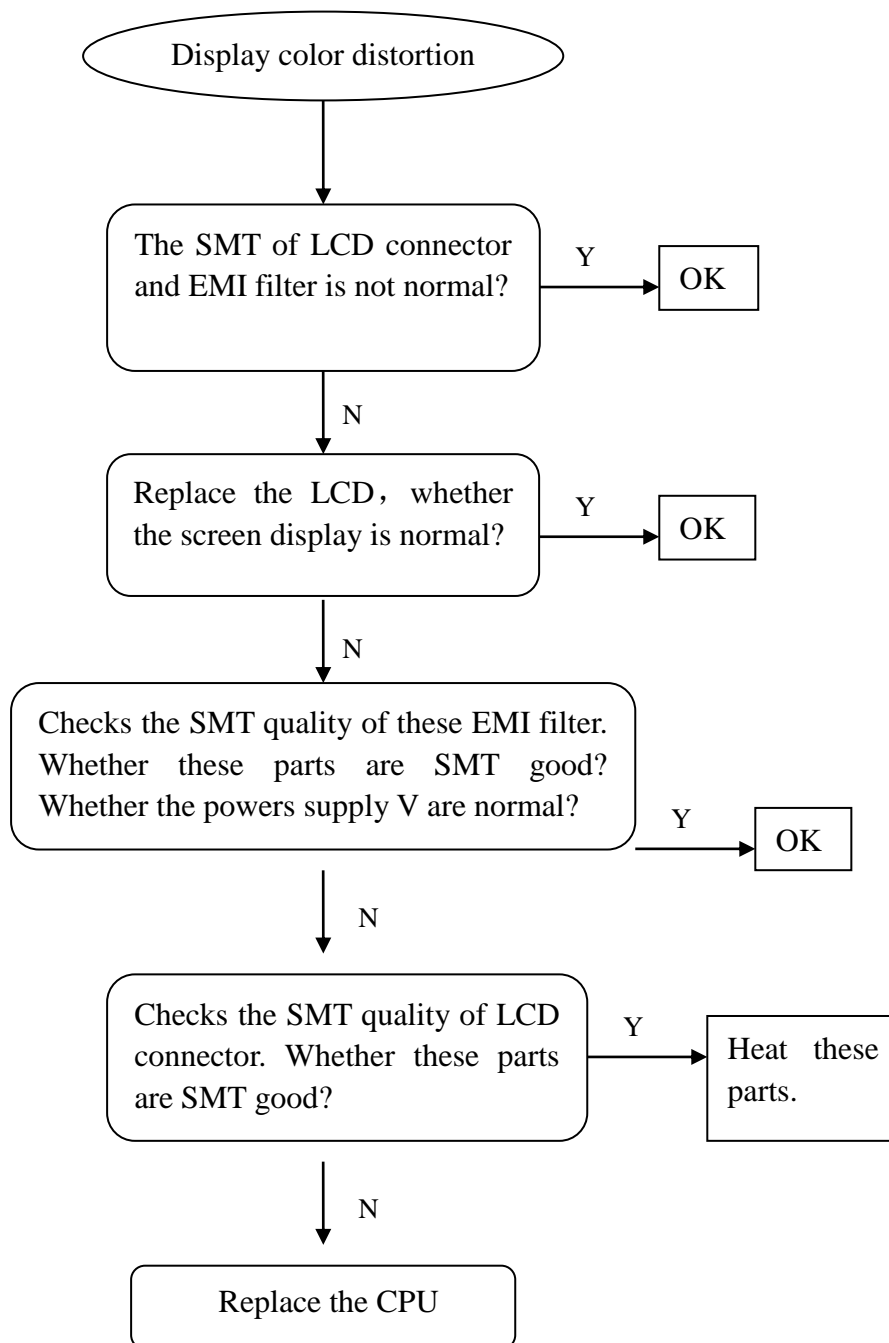




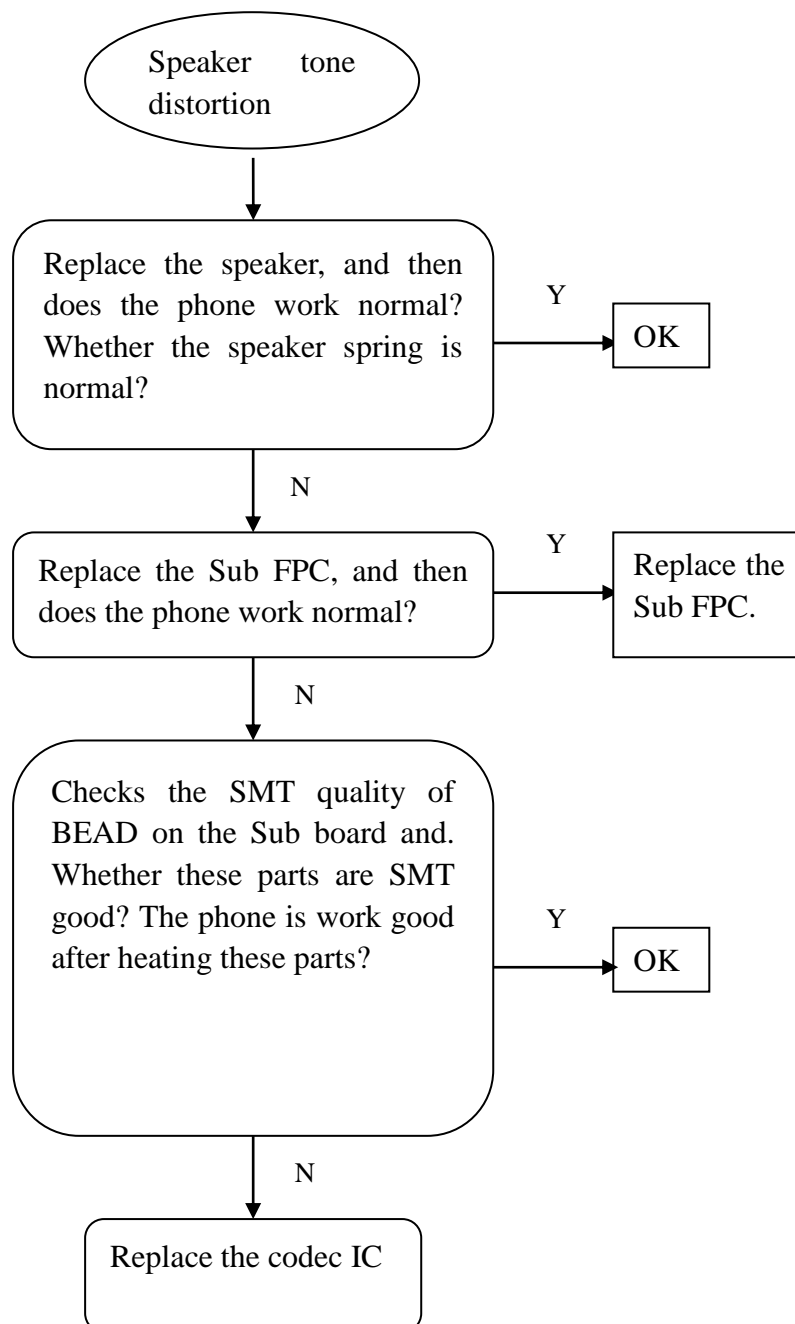
### 3.11 Microphone has no effect



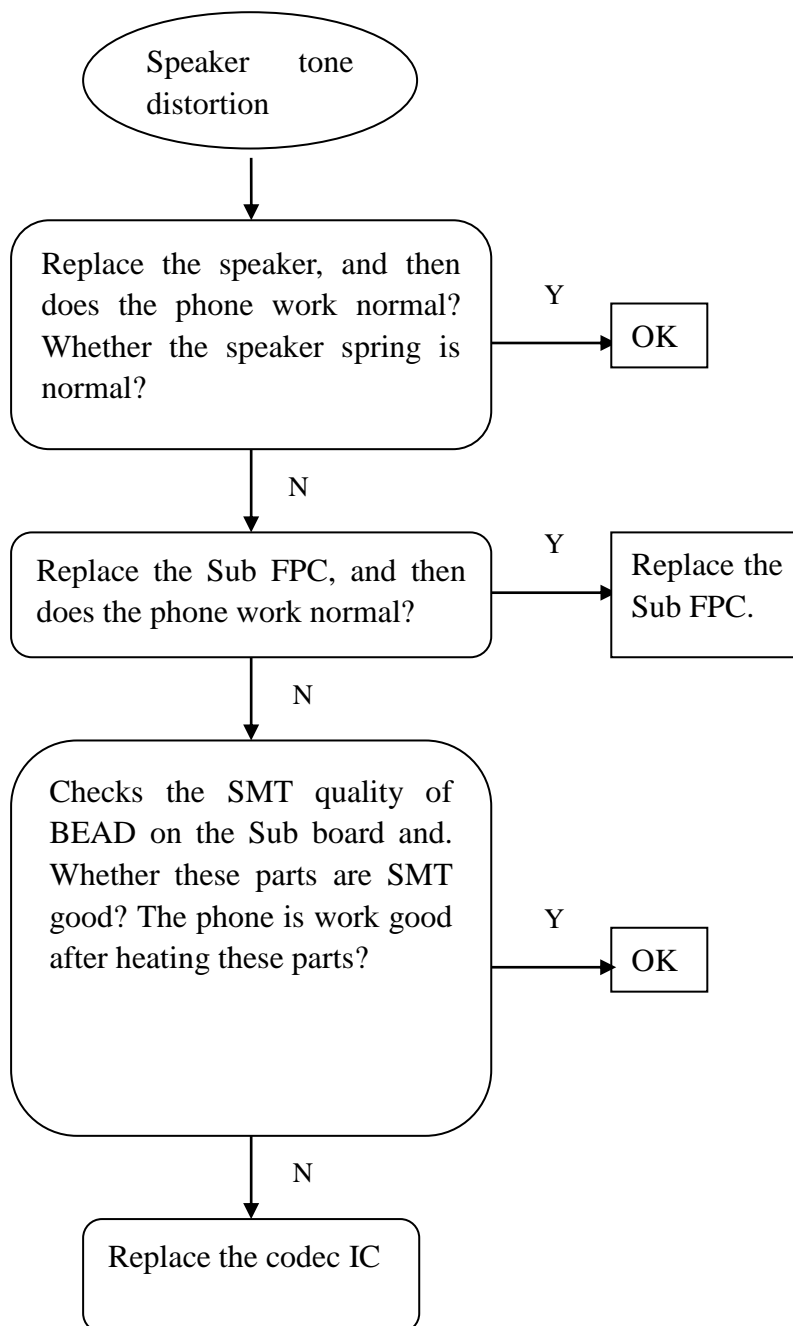
### 3.12 Display color distortion



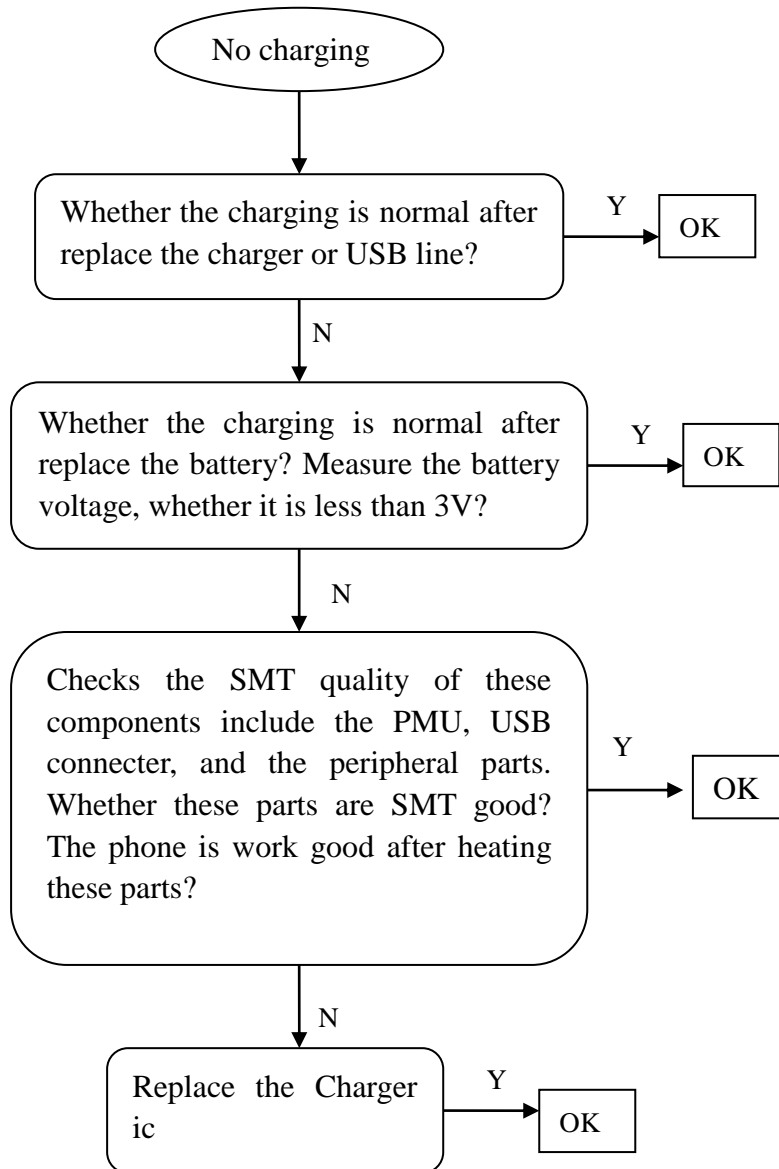
### 3.13 Speaker tone distortion



### 3.14 Speaker tone smaller

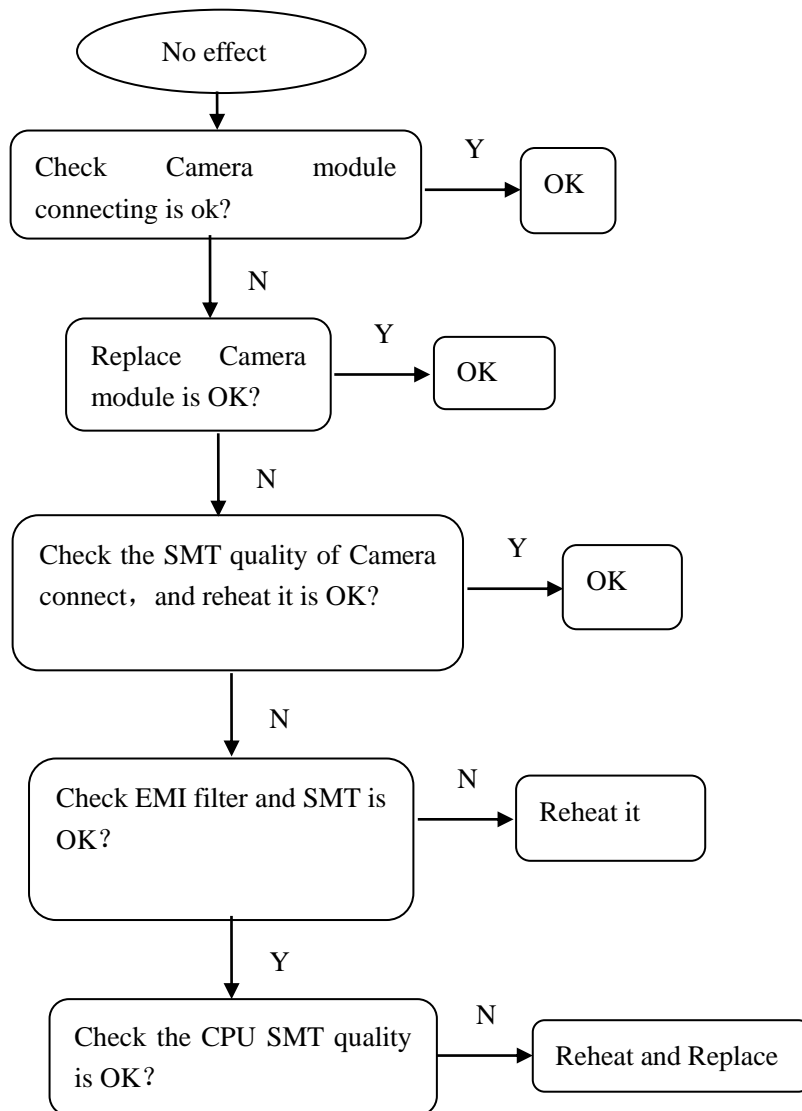


### 3.15 No charging

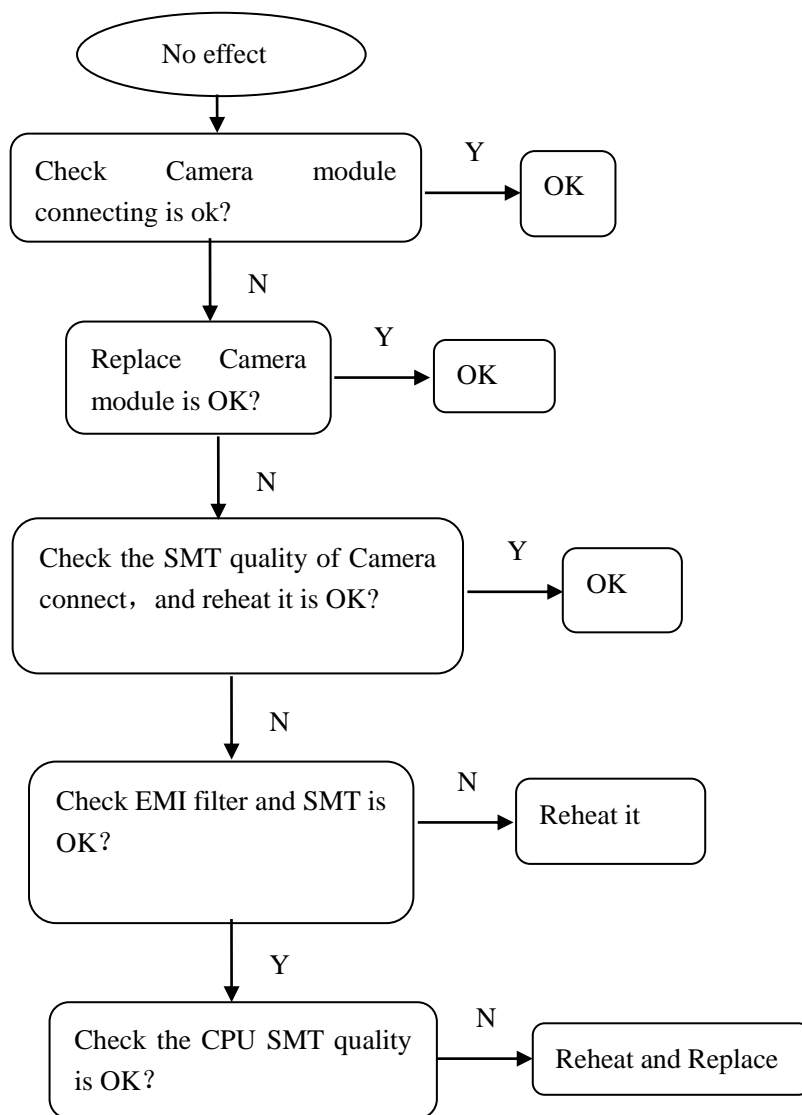


### 3.16 Camera has no effect

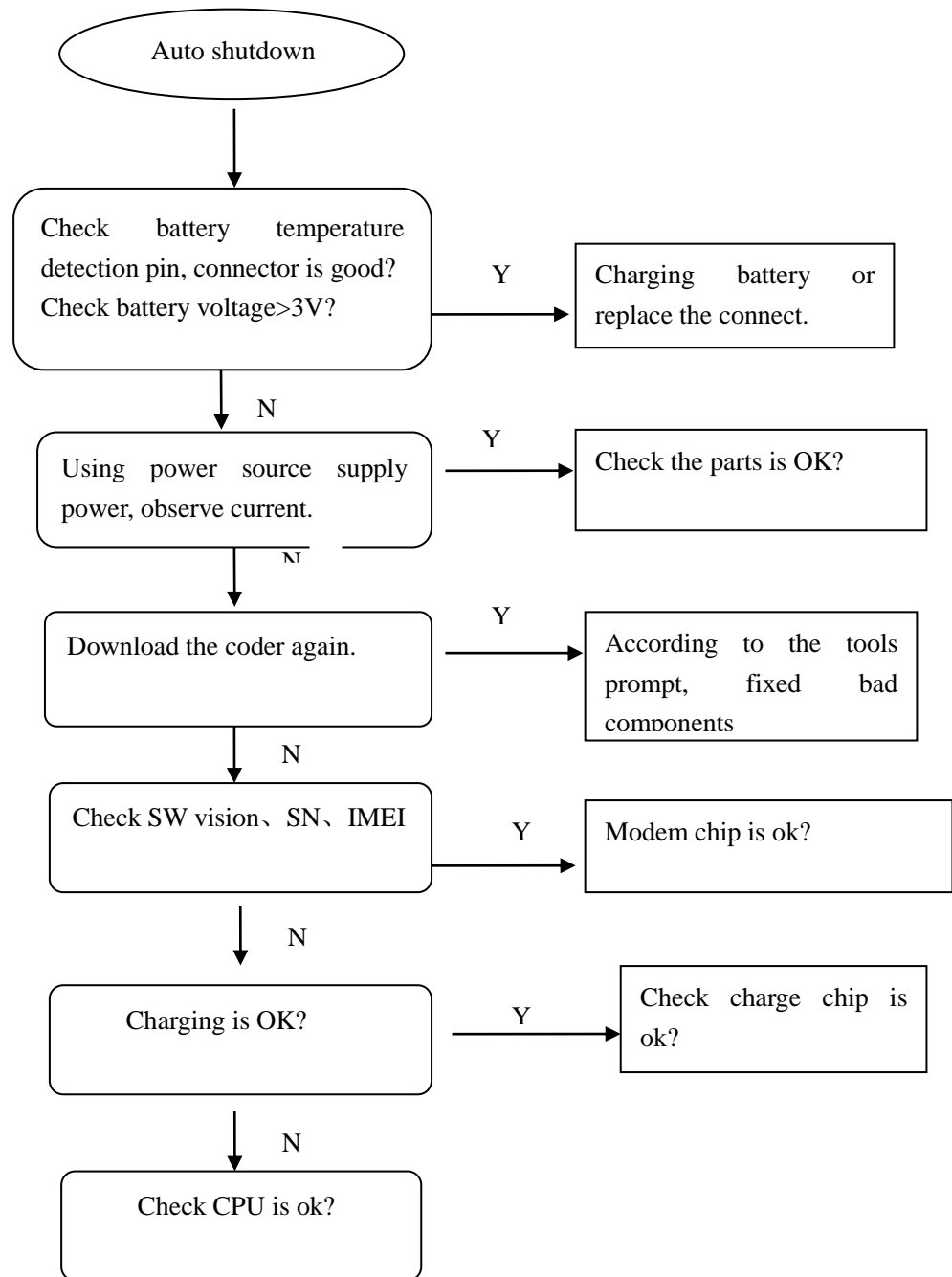
#### 3.16.1 Main camera has no effect



### 3.16.2 Sub camera has no effect



### 3.17 Auto shutdown





### 3.18 SIM Card has not be detected

