

Service Manual for L1 and L2

# Nokia Asha 503 Dual SIM Nokia Asha 503

RM-922, RM-958 (Dual SIM)

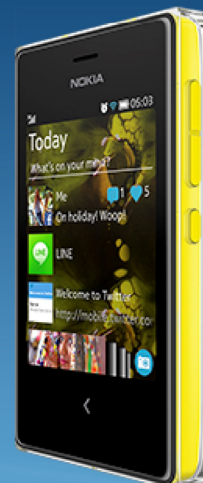
RM-920, RM-947, RM-959 (Single SIM)

## Key features

- 5 MP Camera with a LED flash
- 3.0 QVGA Curved Gorilla glass display
- Capacitive touch screen
- Capacitive Back key
- Wi-fi support

Version 1.0

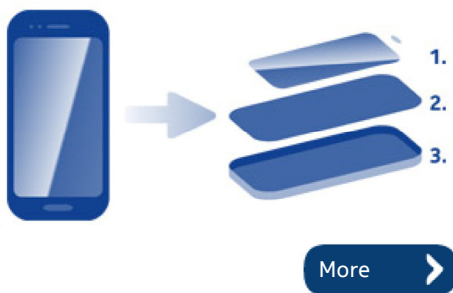
Check the repair policy before performing any mechanical repair on Service Level 1&2!



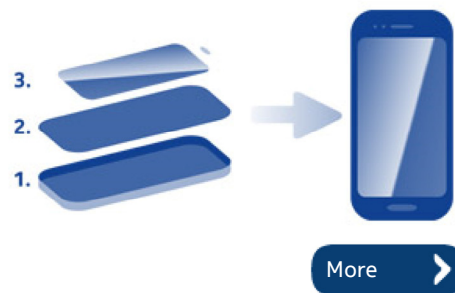
### Exploded view



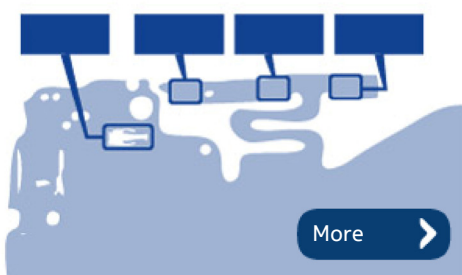
### Disassembly steps



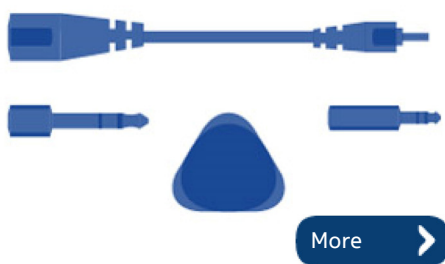
### Assembly hints



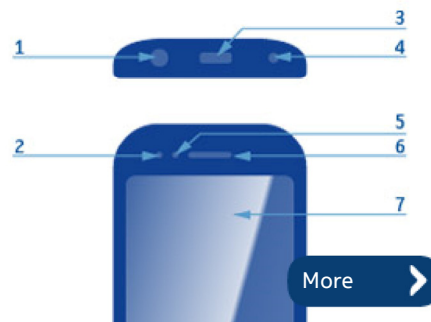
### Solder components



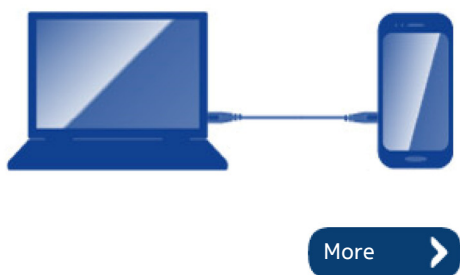
### Service devices

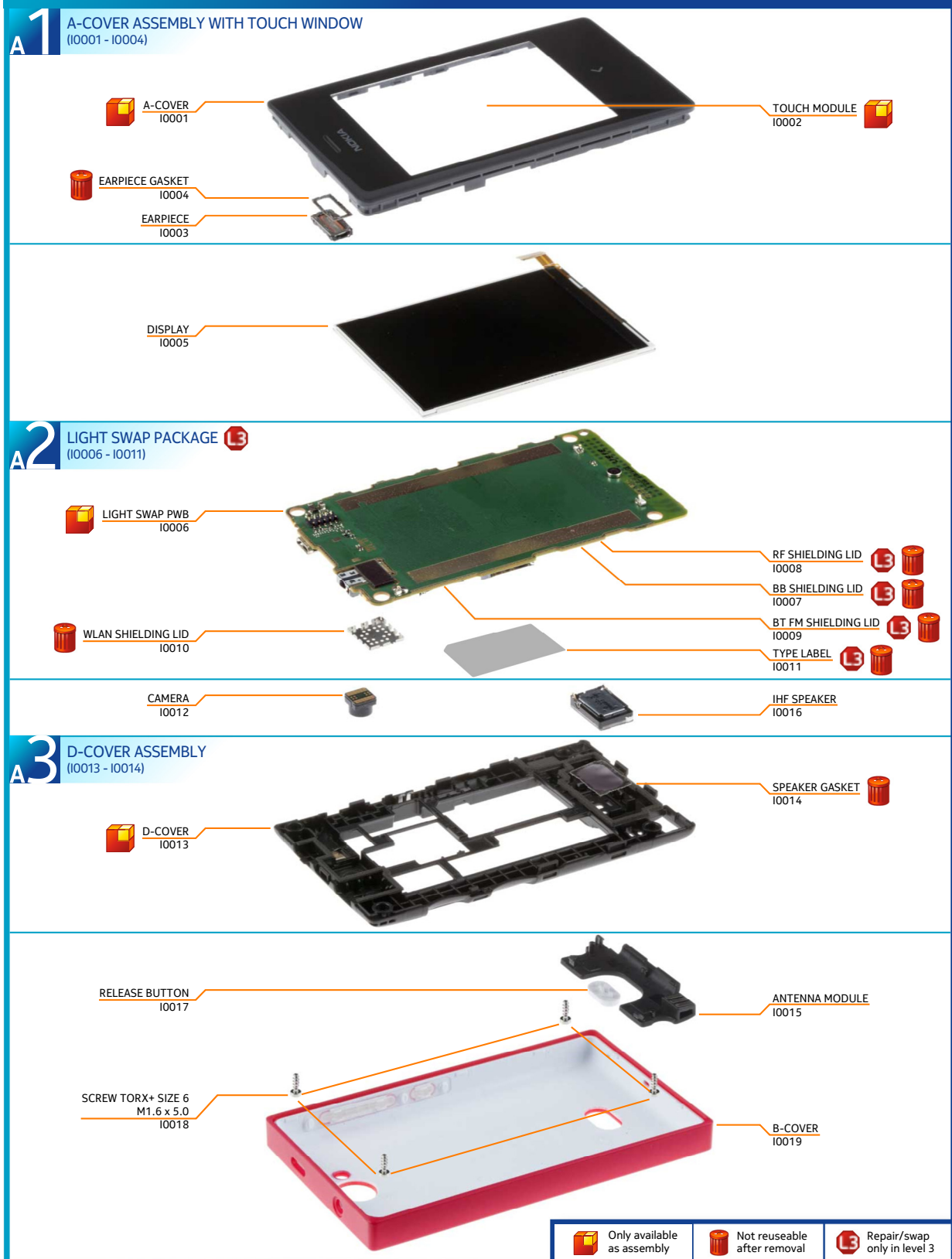


### Product controls and interfaces



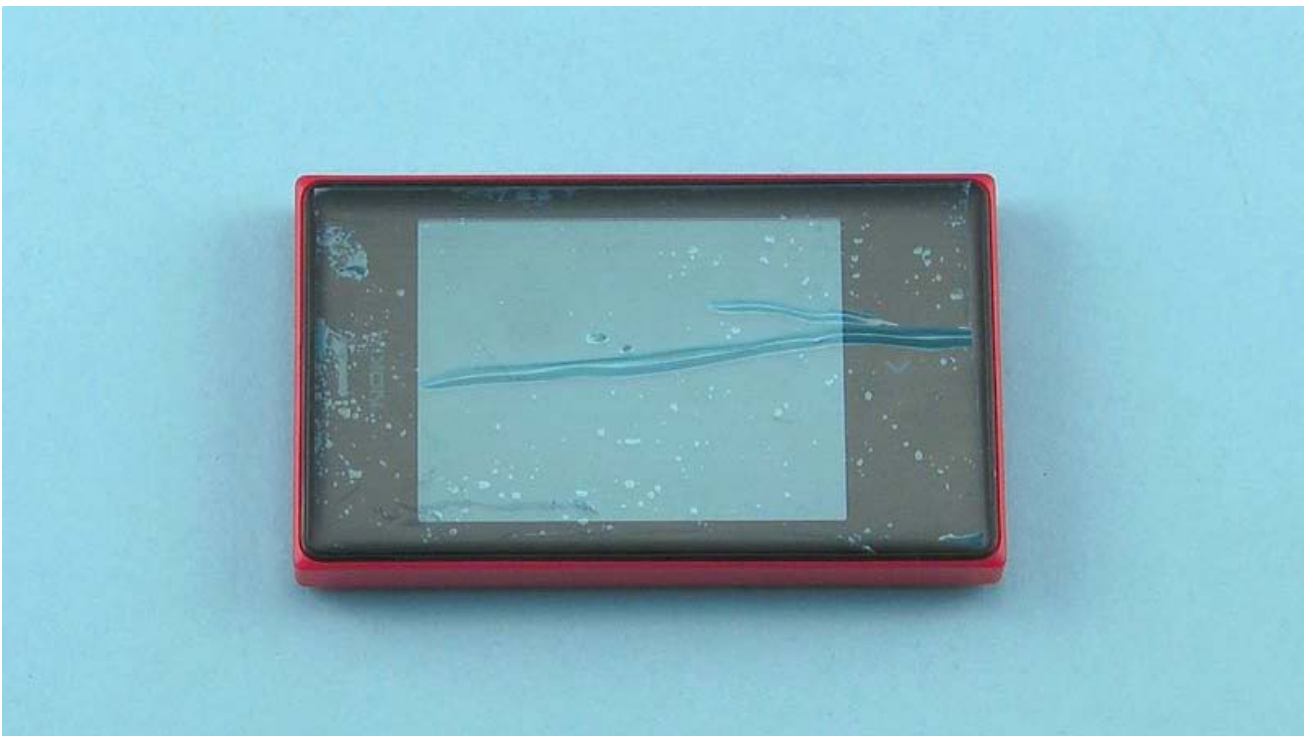
### Service concept



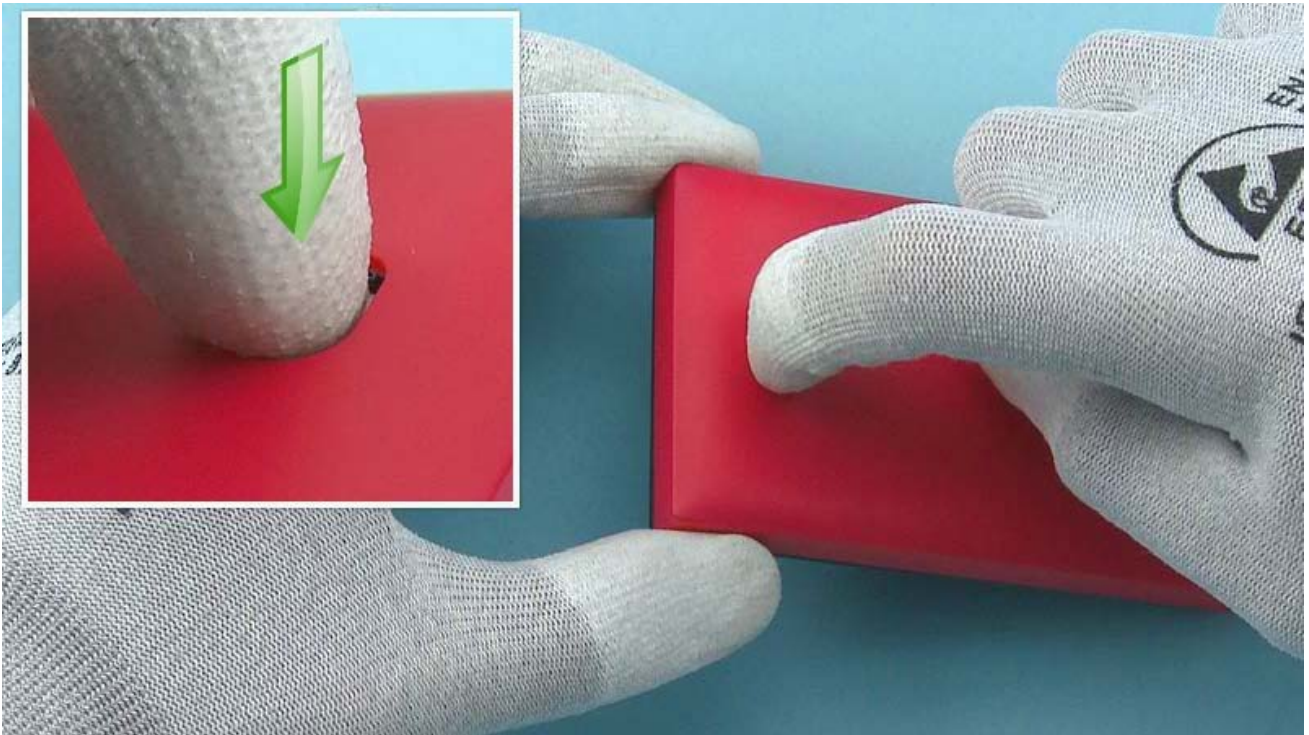




1) For disassembling you need the Nokia Standard toolkit version 2. You will also need the camera removal tool SS-276. Please note that the phone used in disassembly and assembly is a prototype phone and does not look like the sales model.



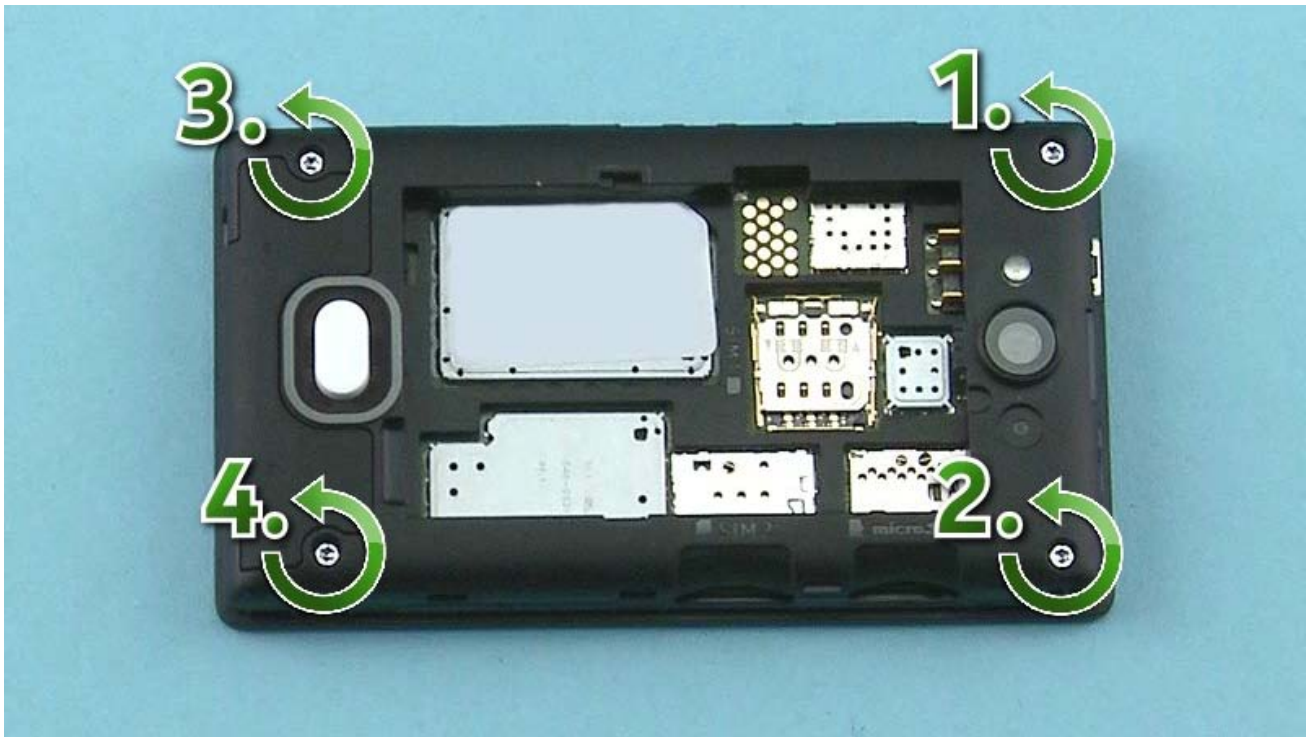
2) Protect the TOUCH WINDOW with protective film.



3) Release the B-COVER by pushing down the RELEASE BUTTON.



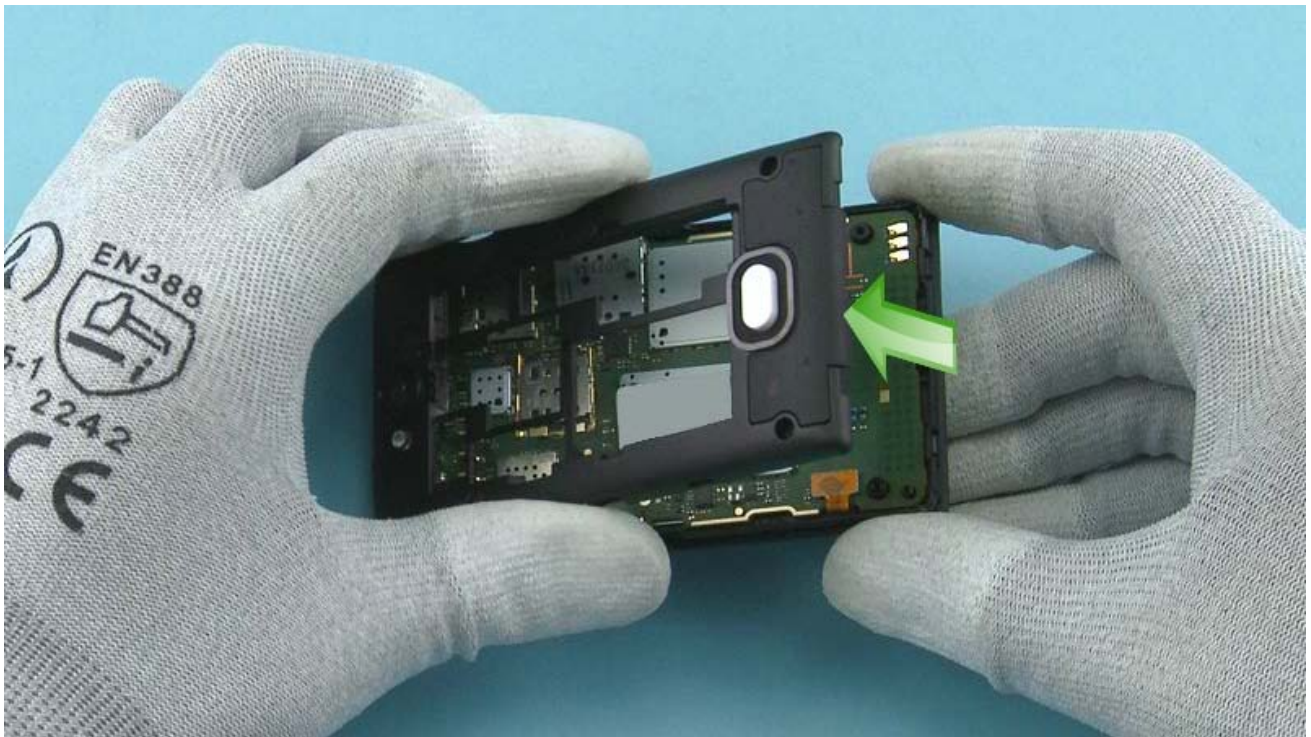
4) Remove the B-COVER bottom end first



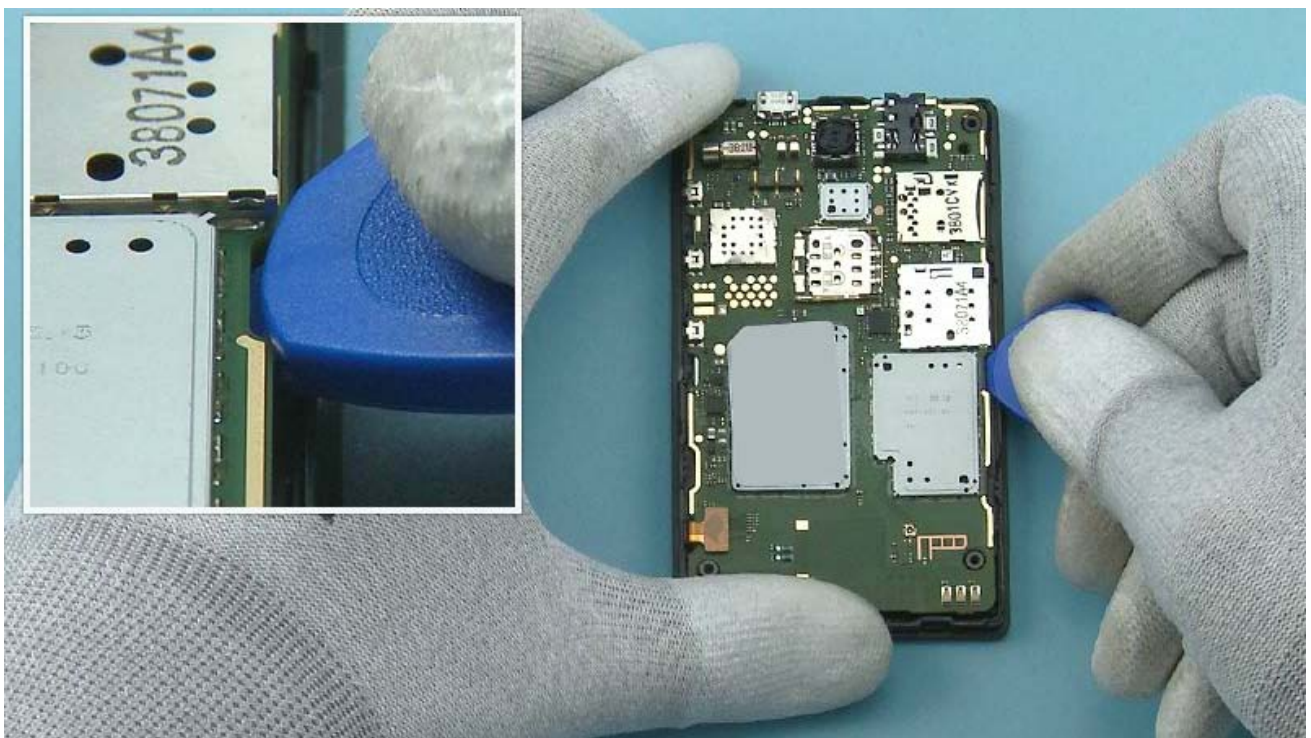
5) Unscrew the four Torx+ size 6 screws in the order shown.



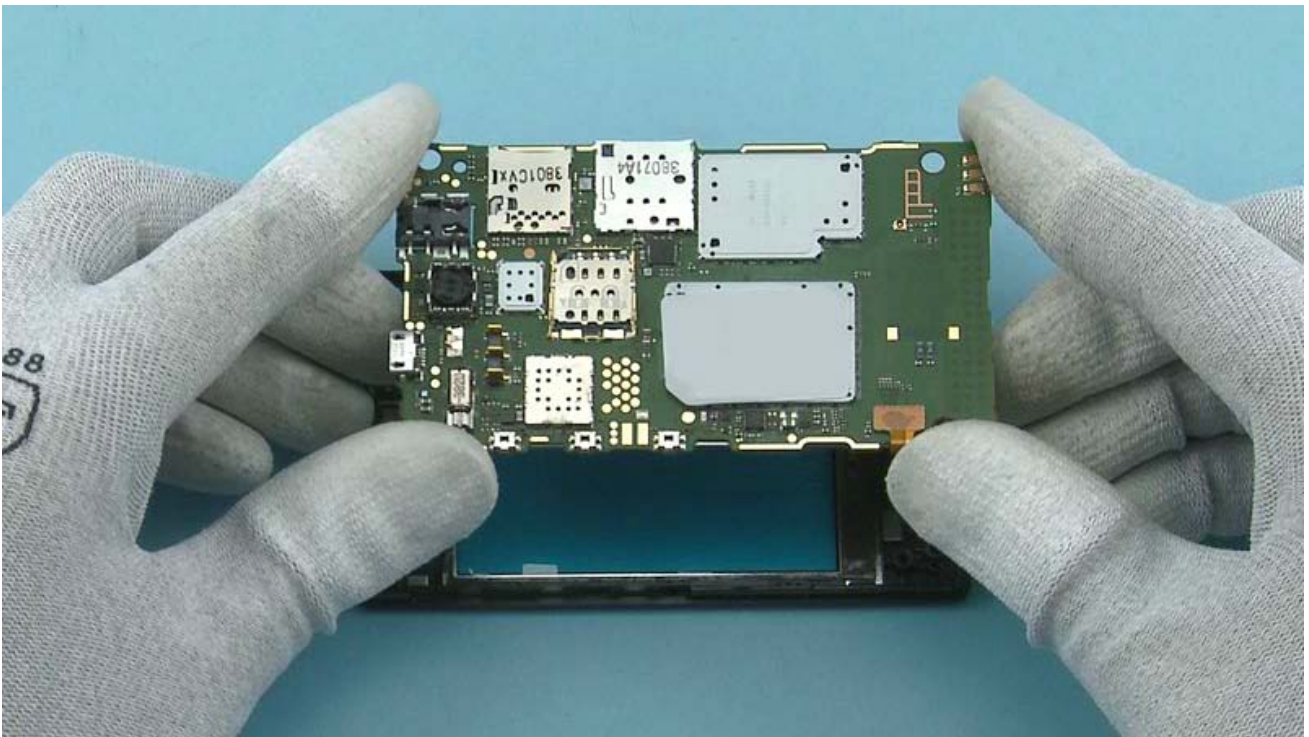
6) Release the two shown clips of the D-COVER with the SRT-6.



7) Remove the D-COVER bottom end first.

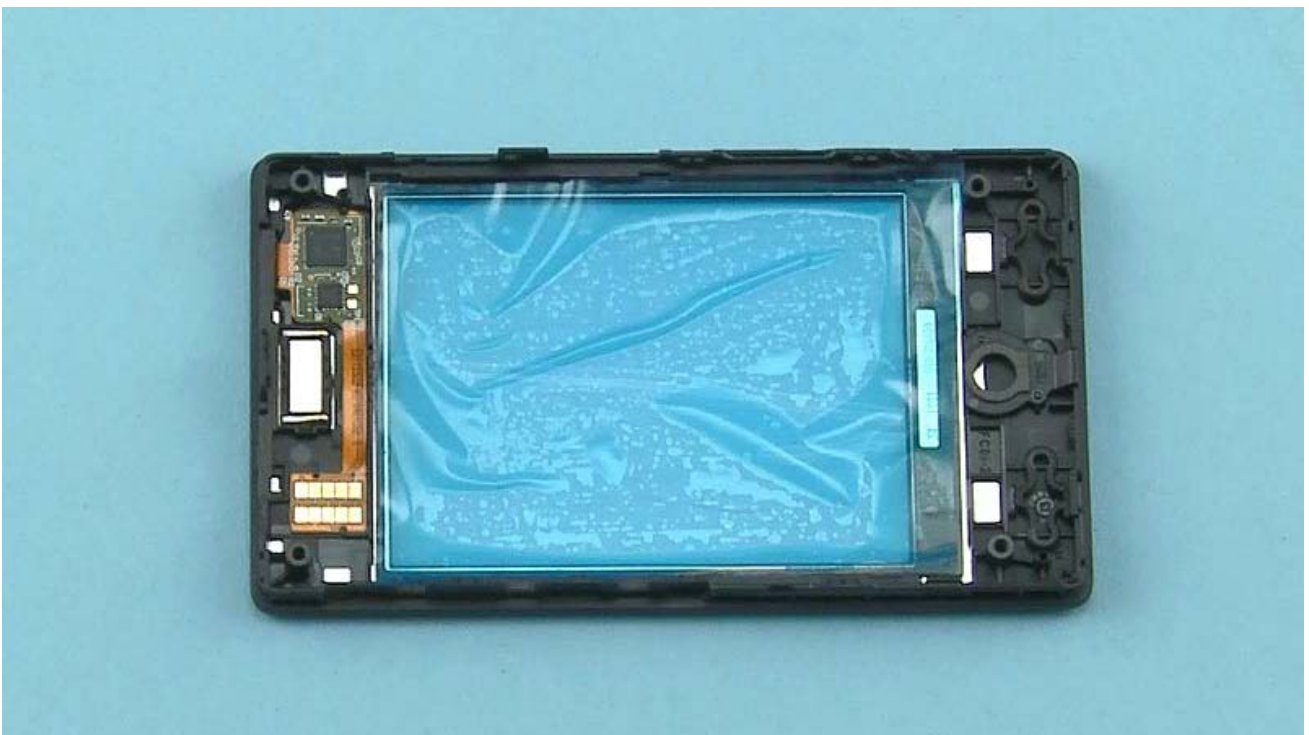


8) Release the ENGINE BOARD from the shown place with the SRT-6.

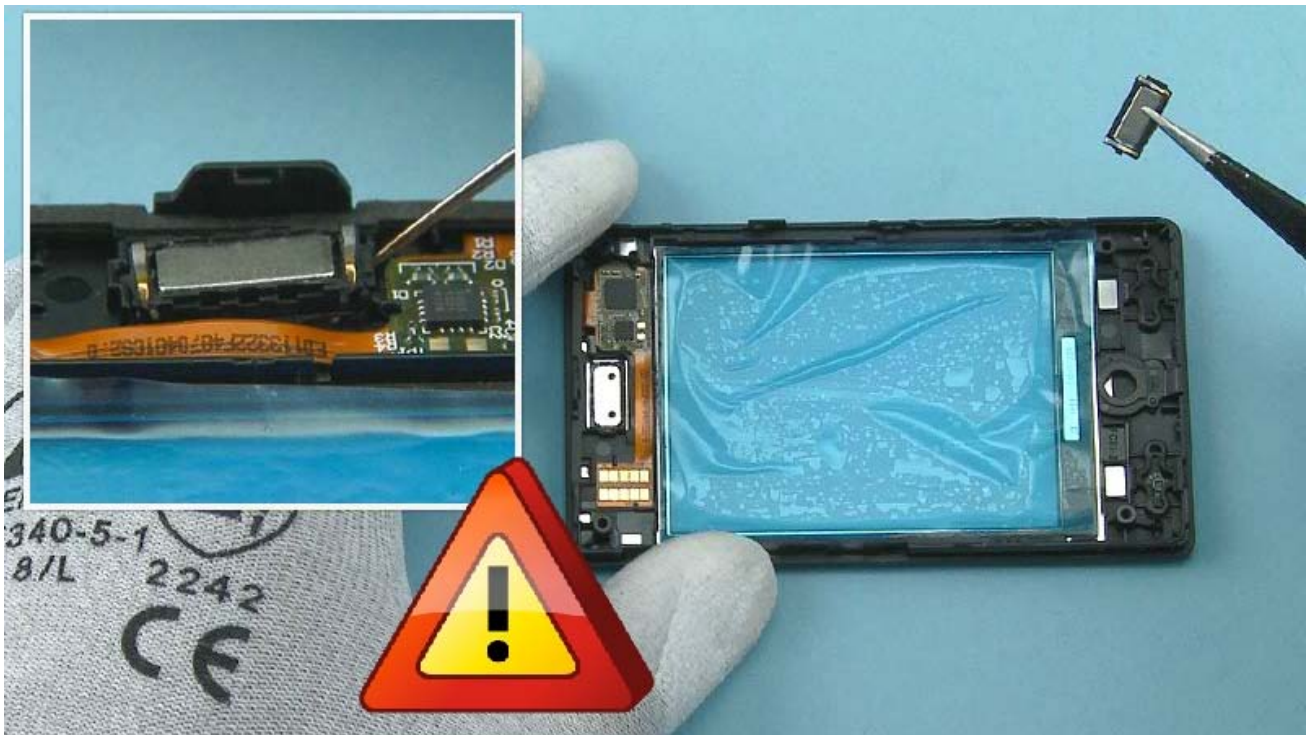


9) Lift up and remove the ENGINE BOARD.

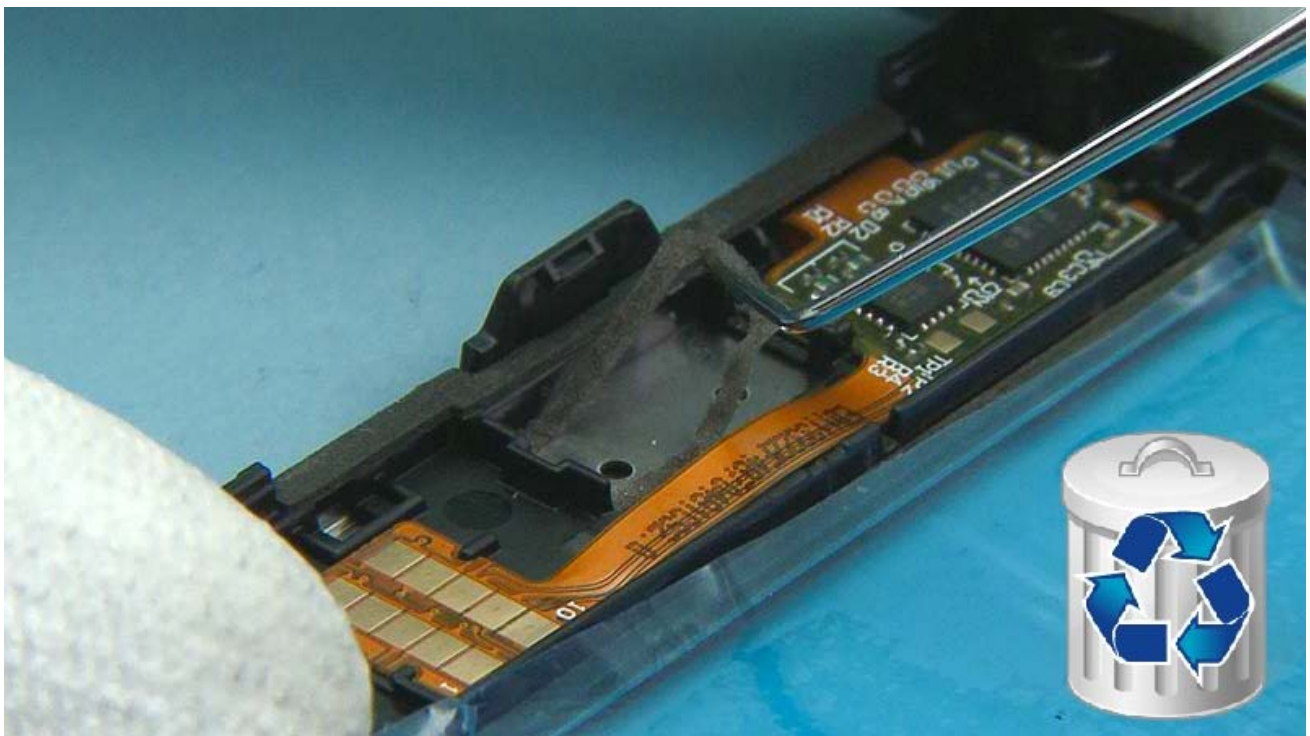
After removing the ENGINE BOARD make sure to protect the DISPLAY with protective film.



10) Protect the other side of the TOUCH WINDOW with protective film.

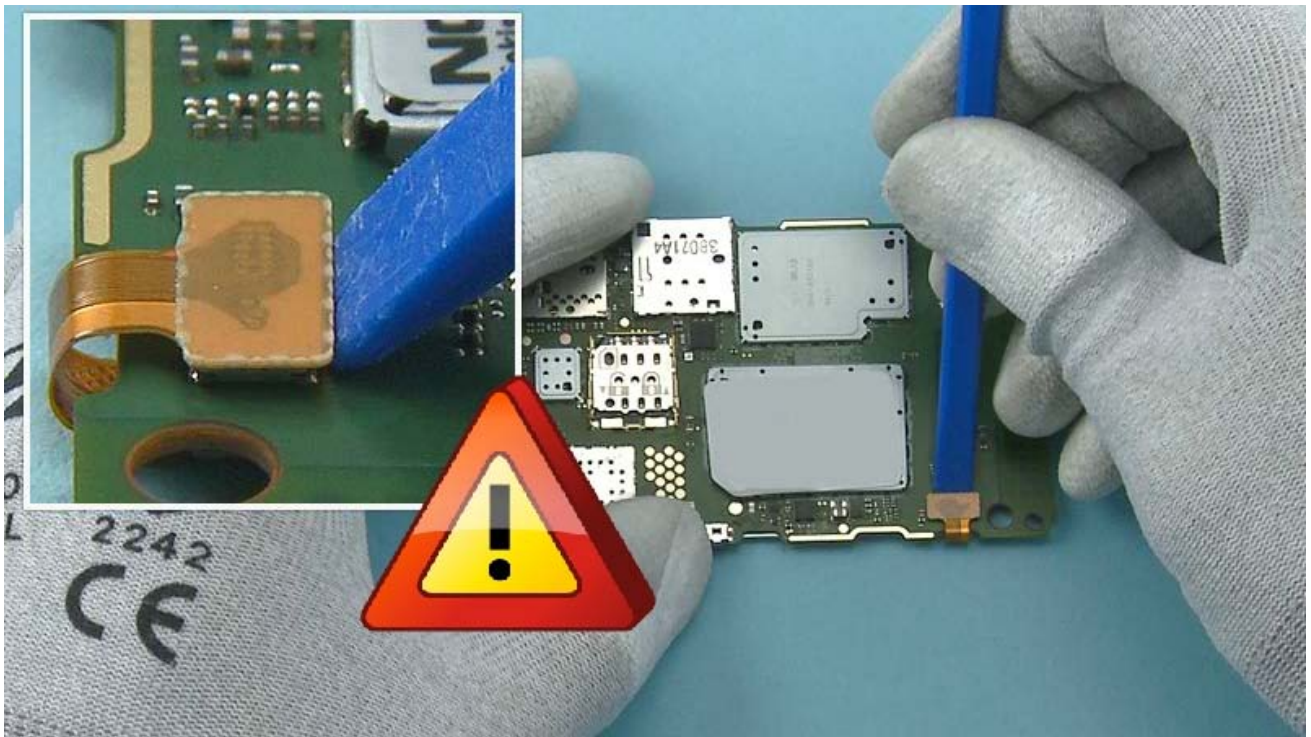


11) Release the EARPIECE with the dental tool. Be careful not to injure yourself with the sharp end of the dental tool. Remove the EARPIECE with tweezers.

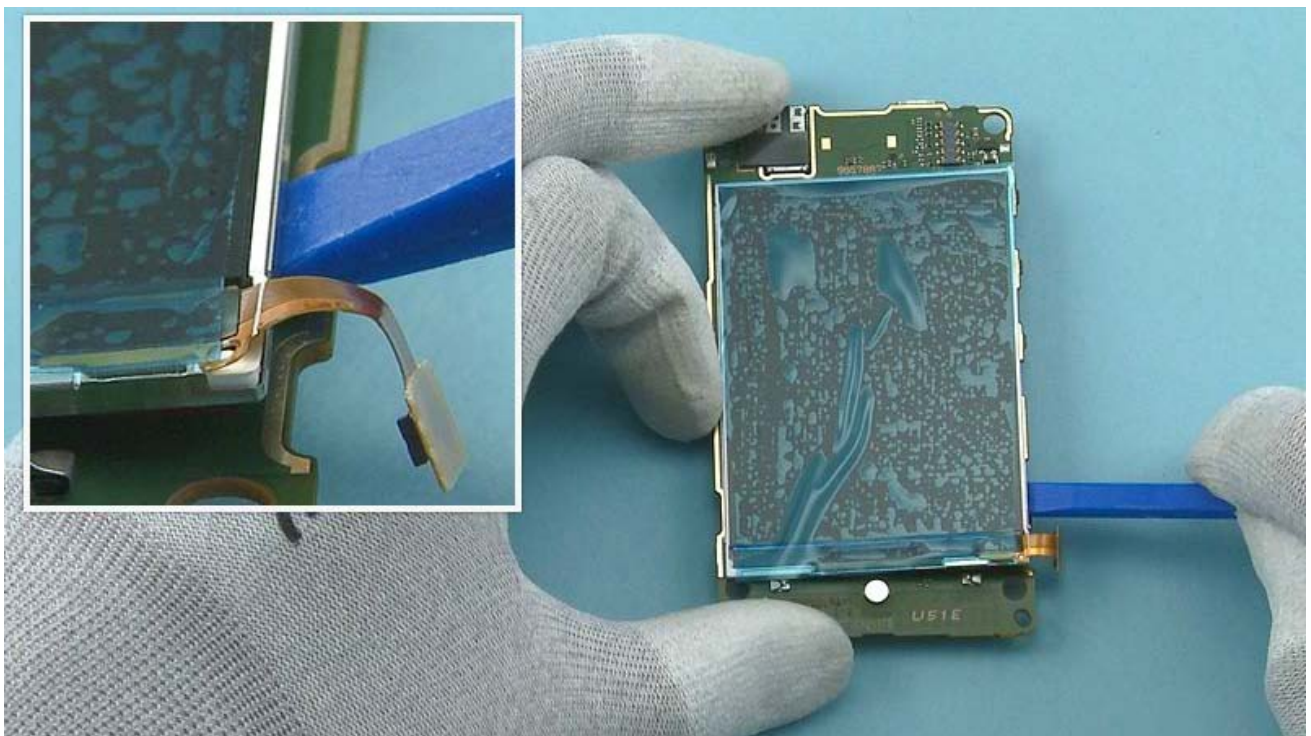


12) Remove the EARPIECE GASKET with the dental tool. Do not use it again. Discard it.

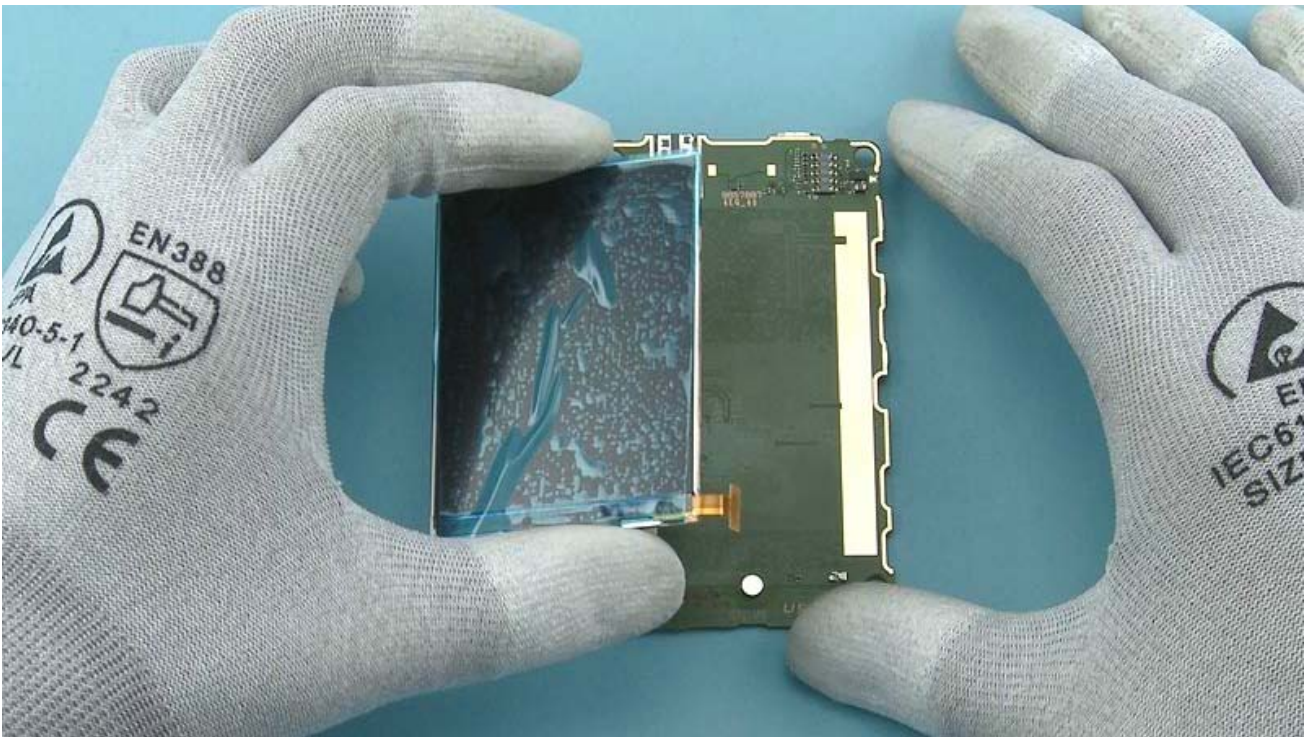




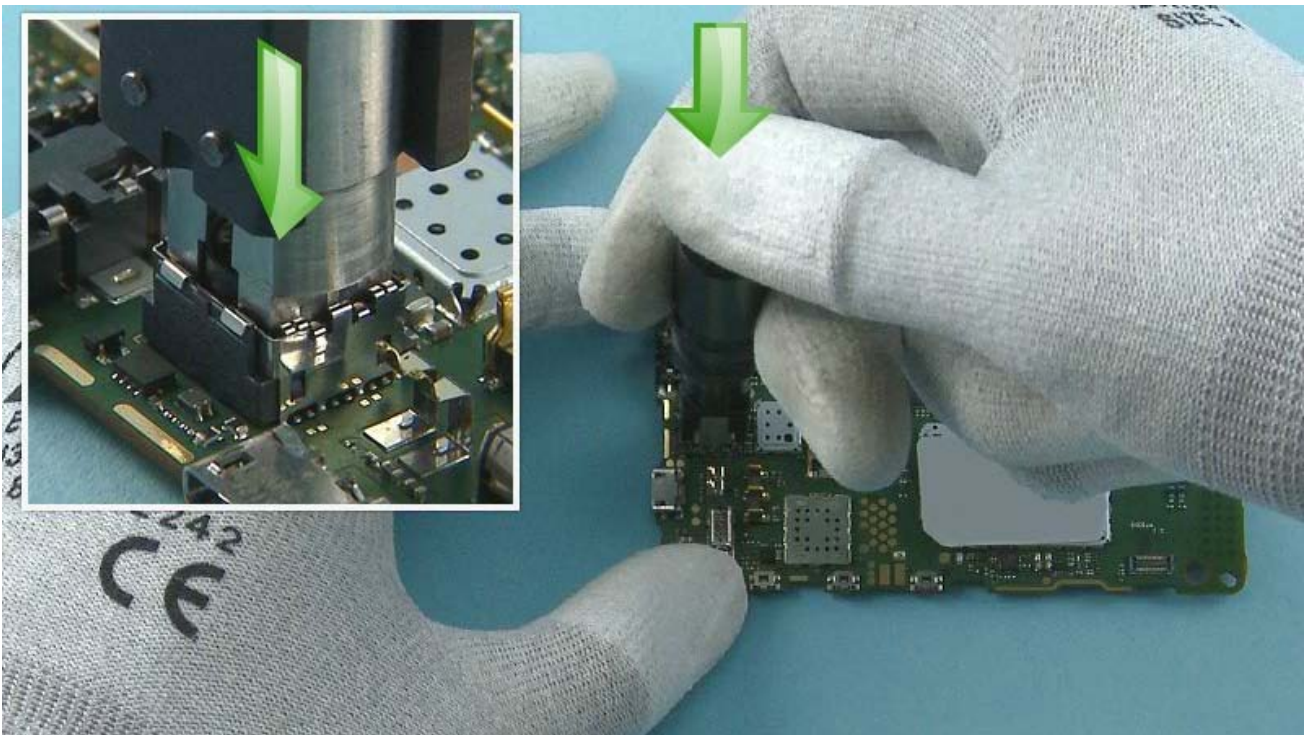
13) Open the DISPLAY connector with the SS-93. Be careful not to damage the connector or any components nearby.



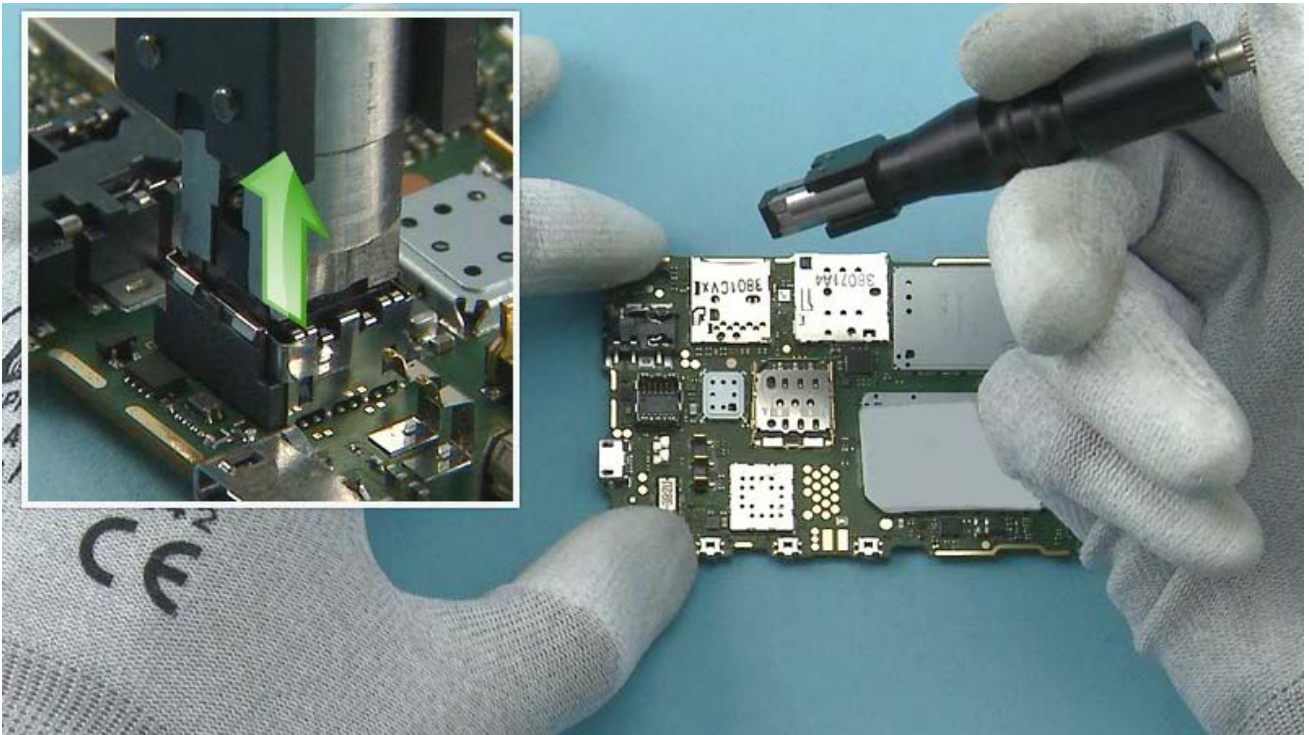
14) Release the DISPLAY by carefully sliding the SS-93 under it from the shown place.



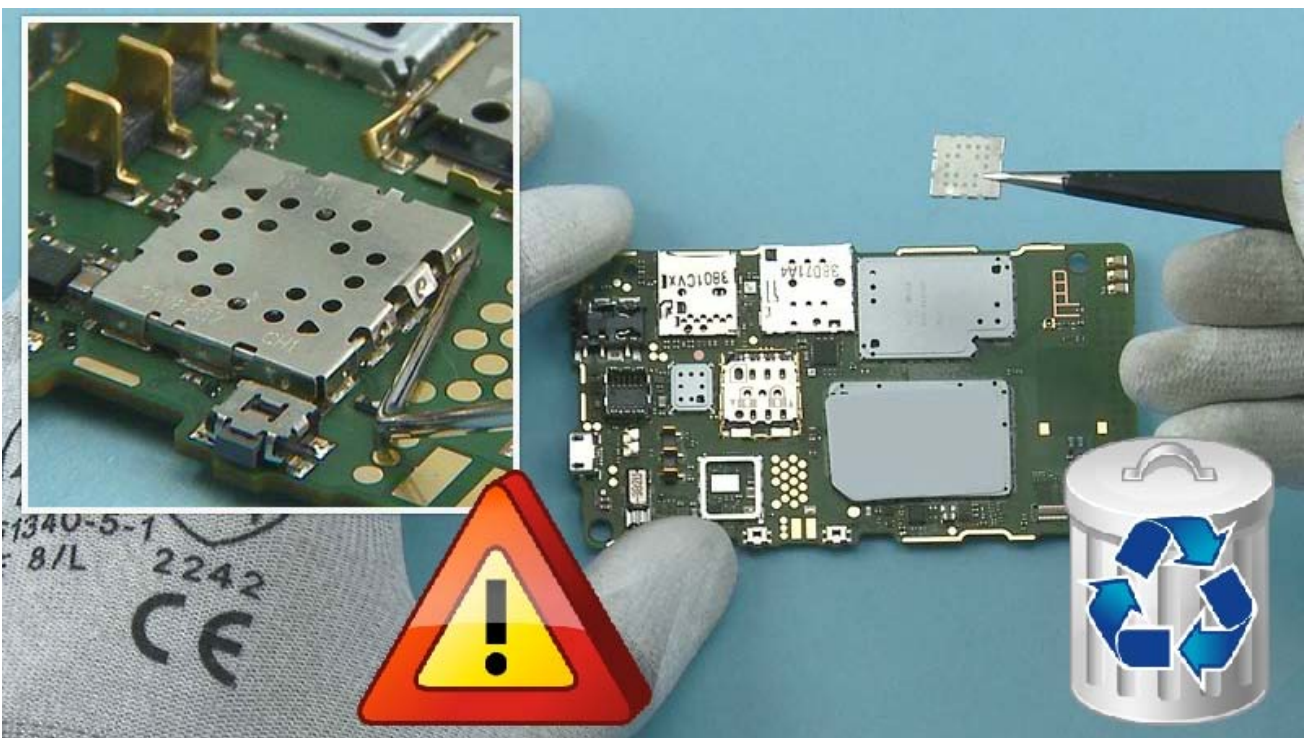
15) Remove the DISPLAY.



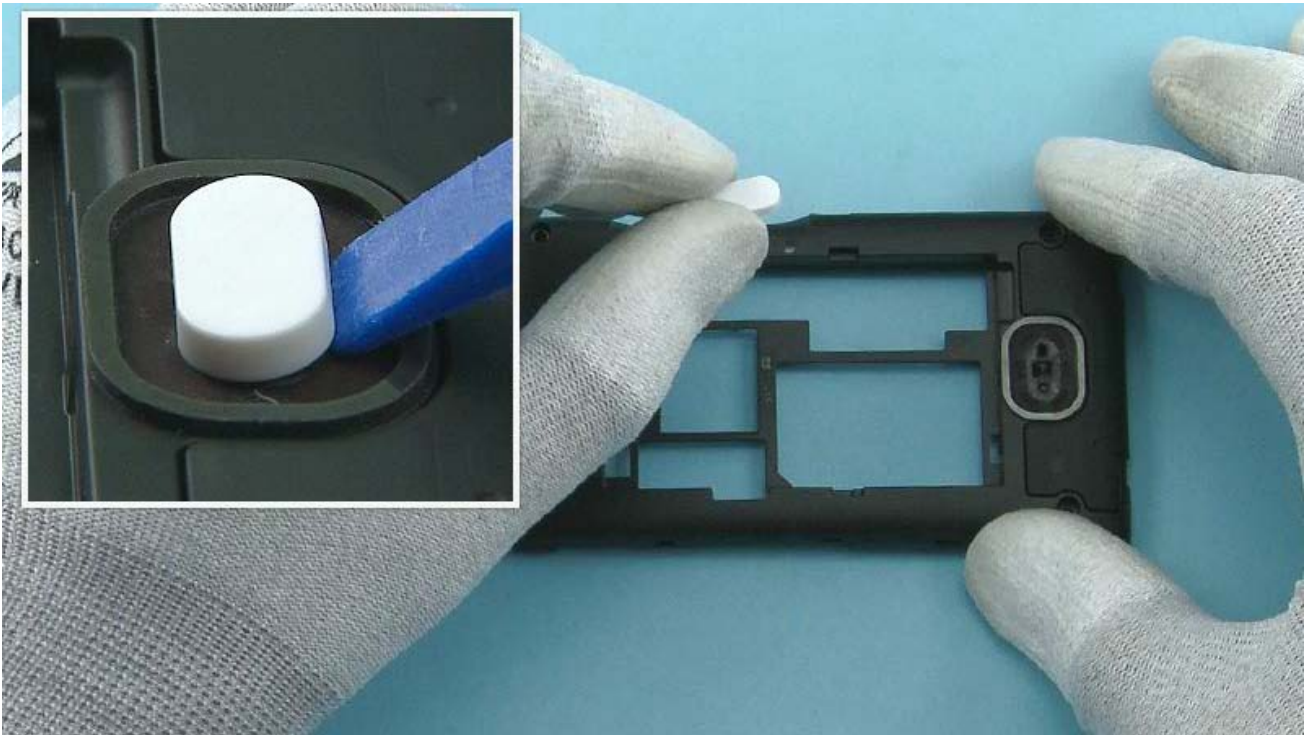
16) Push the SS-276 camera removal tool to the CAMERA socket. Then push and hold down the button on top of the SS-276.



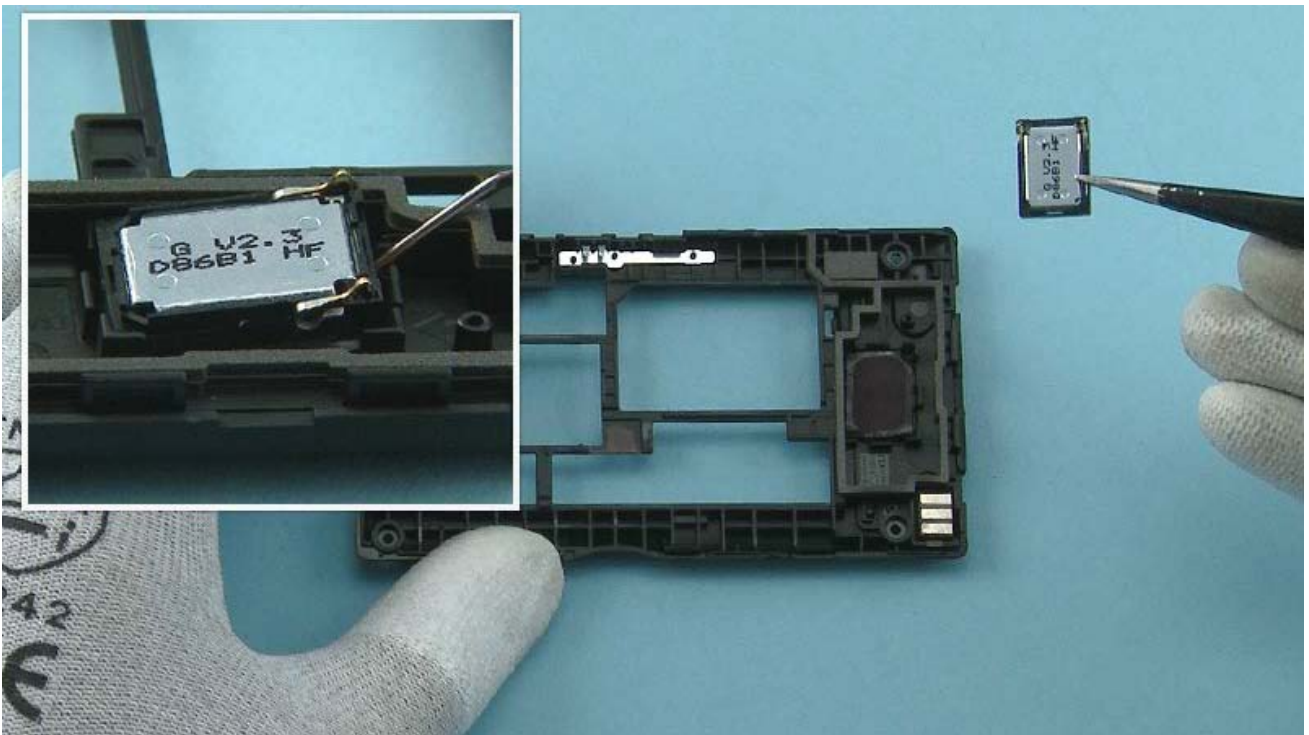
17) Pull out the CAMERA.



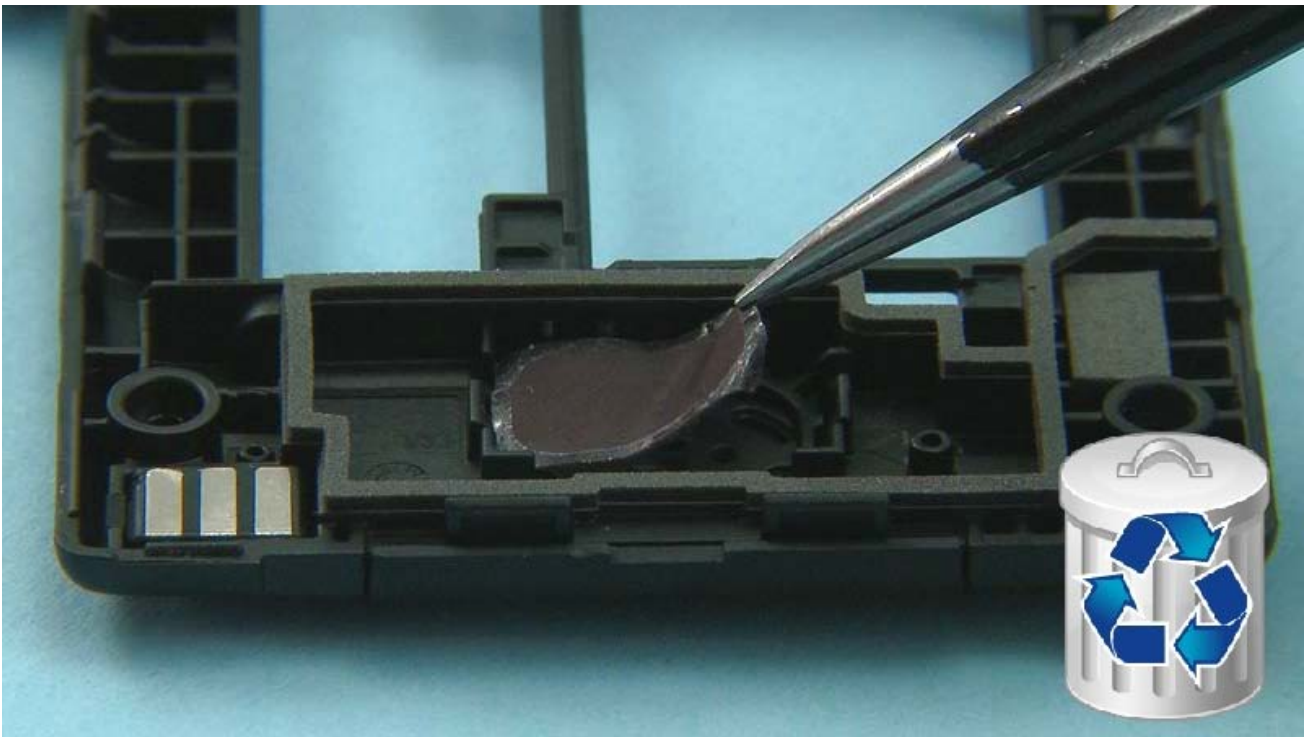
18) Release the WLAN SHIELDING LID with the dental tool. Be careful not to damage any components nearby. Remove and discard the WLAN SHIELDING LID.



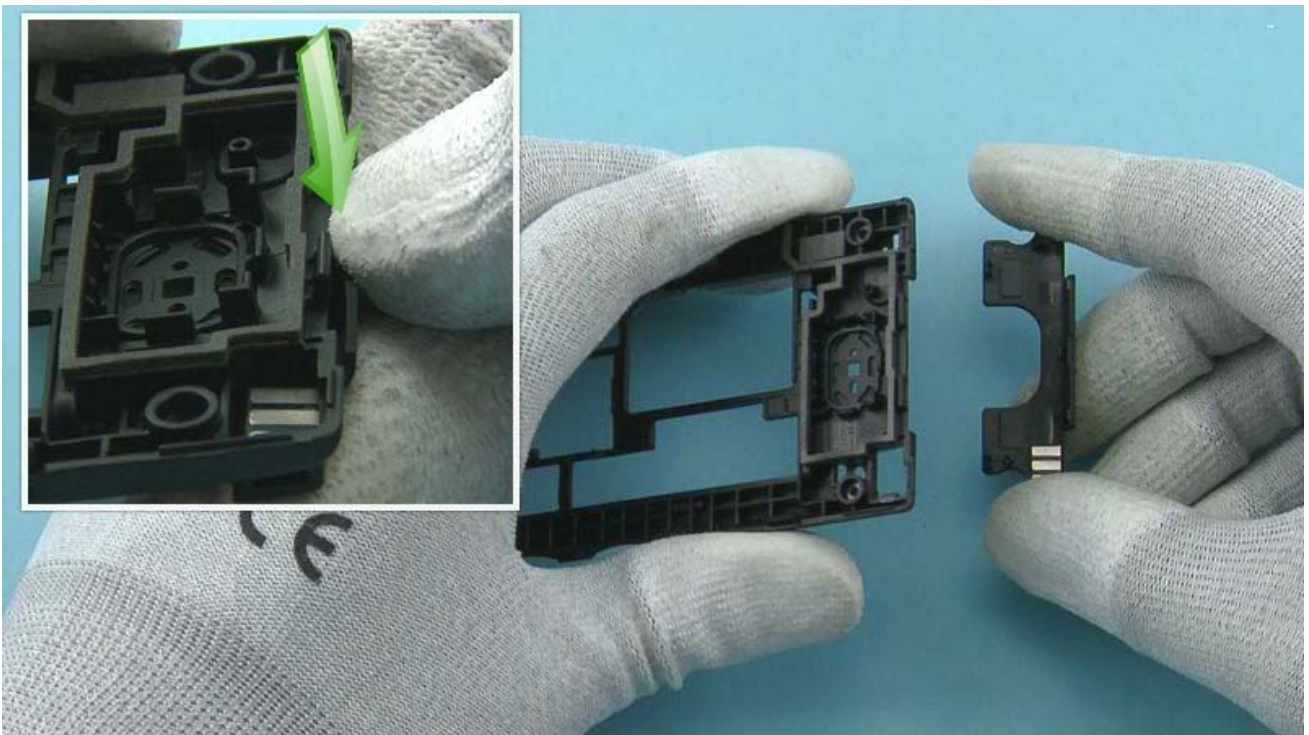
19) Release the RELEASE BUTTON with the SS-93 and remove it.



20) Release the IHF SPEAKER with the dental tool and remove it with tweezers.



21) Remove and discard the SPEAKER GASKET.

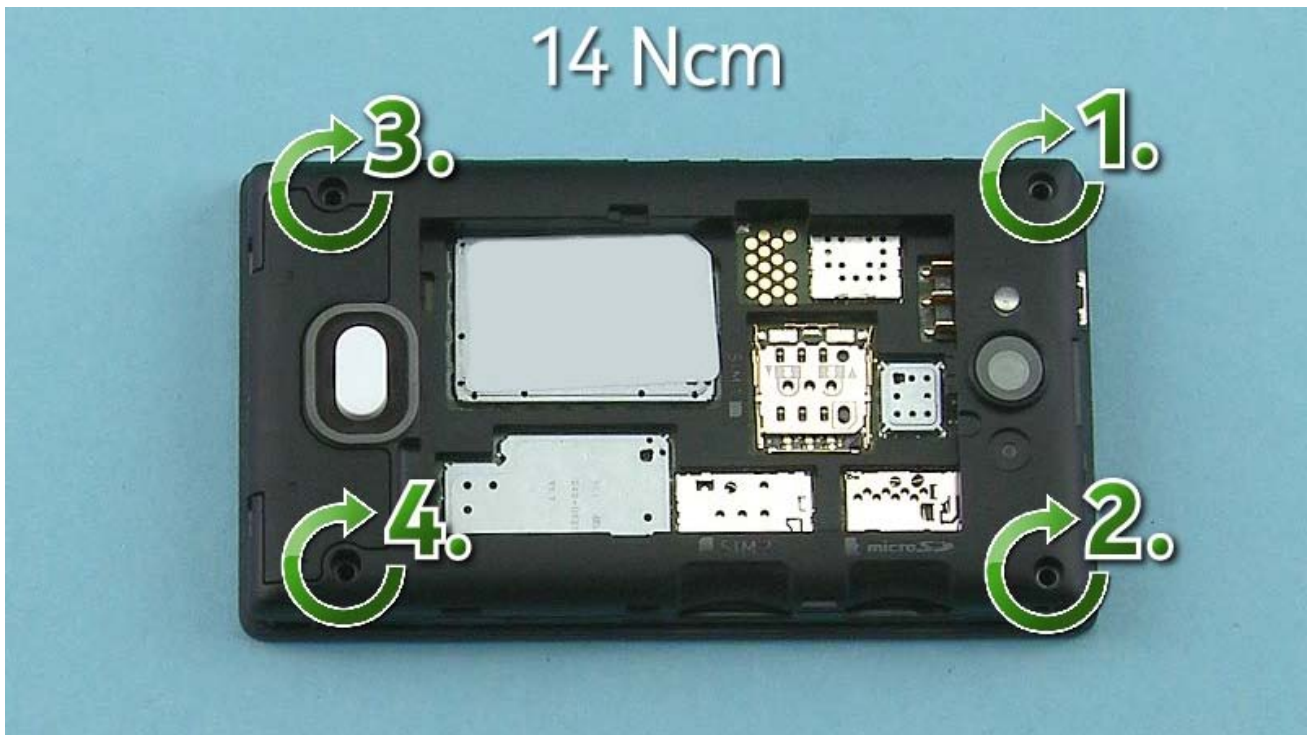


22) Push down the ANTENNA MODULE to remove it.

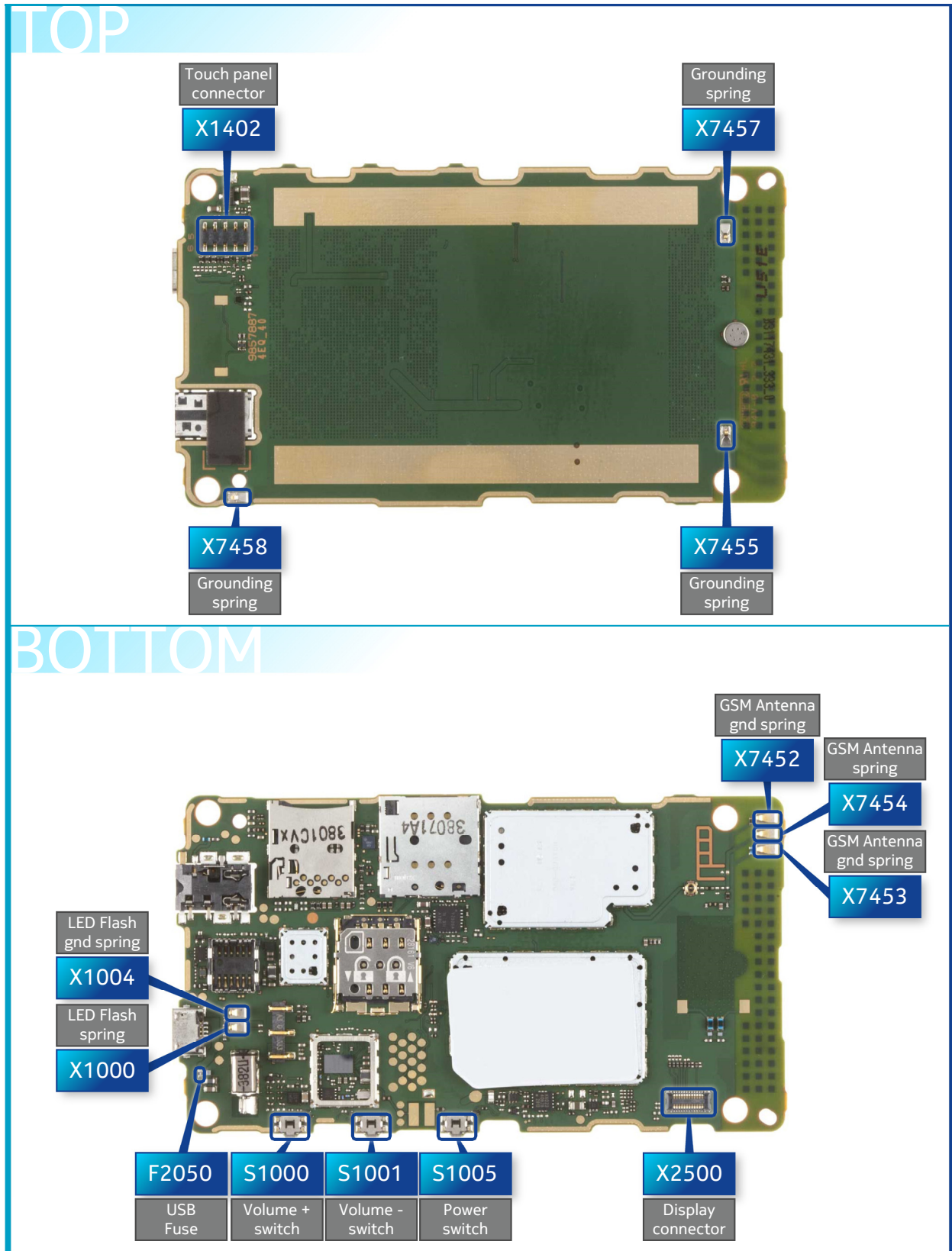


23) The Nokia Asha 503 disassembly procedure is complete.

-END OF DISASSEMBLY-



1) Fasten the four Torx+ size 6 screws in the order shown to the torque of 14 Ncm.







AC-20 Travel charger  
AC-8C + CA-190CD (China)



BL-4U Battery



SS-276 Camera removal tool

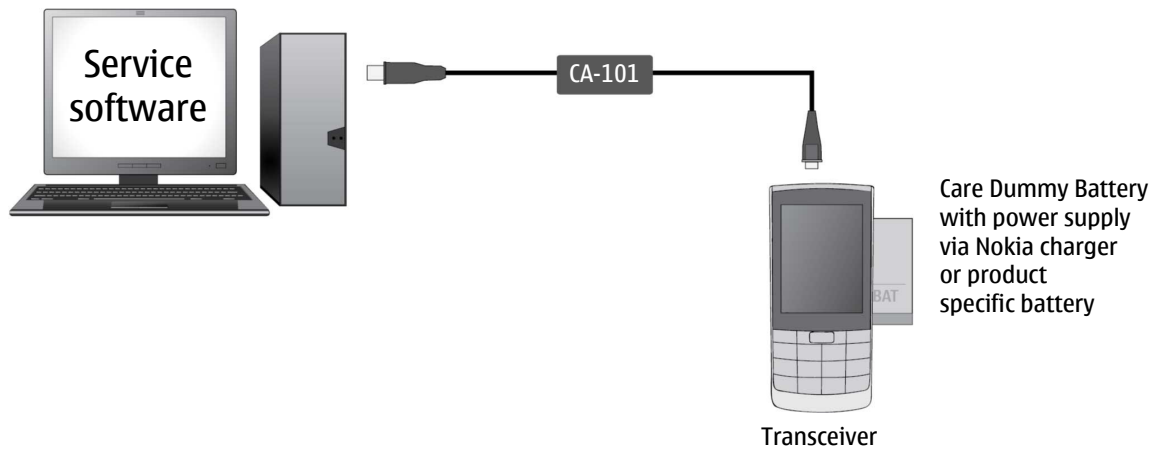


Nokia Standard Toolkit (v2)

For more information, refer to the Service Bulletin (SB-011) on Nokia Online. Supplier or manufacturer contacts for tool re-order can be found in "Recommended service equipment" document on Nokia Online.



## Flashing concept



Version	Date	Description
1.0	07.11.2013	First published version