

Galaxy S8

Important Management Point

HHP Global CS team

Rev 1.0

Revision History

Date	Rev	Comments	Pages
2017.03.27	1.0	- Initial version	

Notice

This guide is intended solely for the Samsung Electronics internal training and may contain trade secret, industrial technology or privileged and confidential information otherwise protected under applicable law including the Unfair Competition Prevention and Trade Secret Protection Act. Any unauthorized dissemination, distribution, copying or use of the information contained in this guide is strictly prohibited and subject to legal action.

All functionality, features, specifications and other product information provided in this document including, but not limited to, the benefits, design, pricing, components, performance, availability, and capabilities of the product are subject to change without notice or obligation. Samsung reserves the right to make changes to this guide and the product described herein, at anytime, without obligation on Samsung Electronics to provide notification of such change.

Important Management Point

Important Management Point

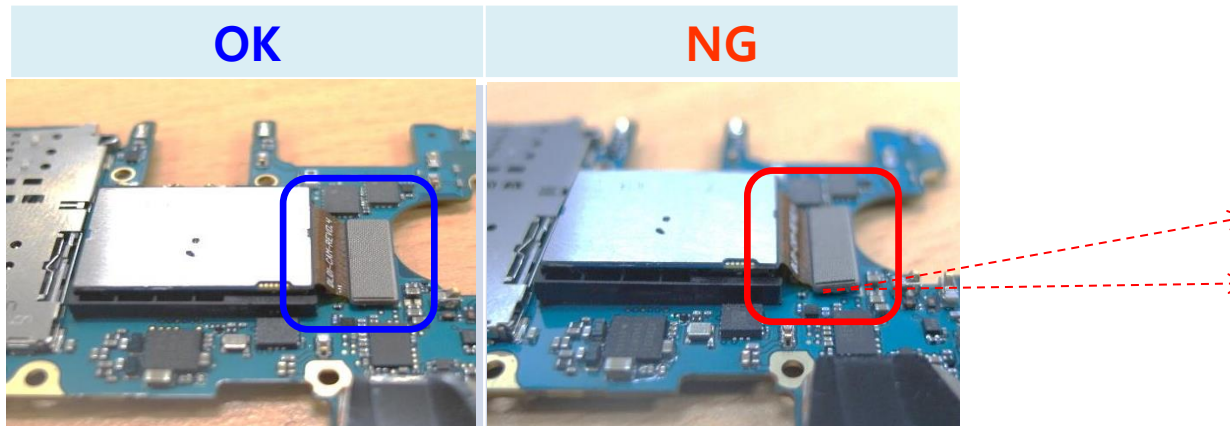
Camera

■ Problem

- Can't enter camera mode.

■ Caution

- Check camera F-PCB connection status



Important Management Point

Front Camera (AF defect)

■ Problem

- Auto Focus fail

■ Caution

- Don't blow air gun to the camera lens.
- Don't press camera lens area with finger.



Important Management Point

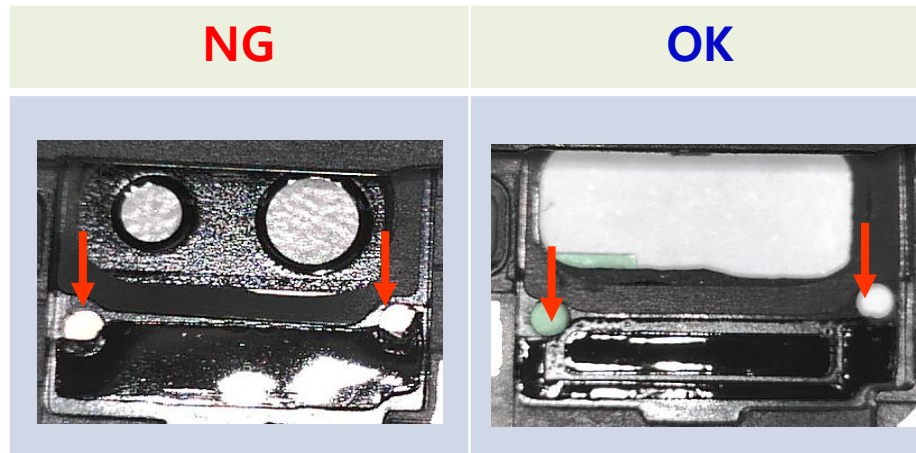
Front Camera (AF defect)

■ Problem

- Auto Focus fail
 - Camera fixing tape was shifted to the upside.

■ Caution

- Camera fixing tape should not cover guide hole.



Important Management Point

Receiver

■ Problem

- Deformation and water resistance defect because of unstable assembly.

■ Caution

- Need visual inspection after assembly



Important Management Point

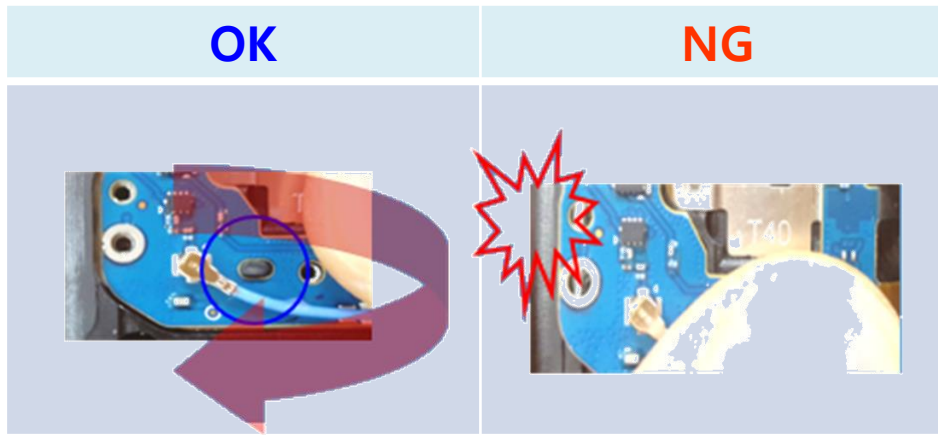
Sub PBA

■ Problem

- Interference of the sub PBA(right side) when assembling

■ Caution

- When the SUB PBA is assembled on the right side, slightly push it inside and assemble the PBA.



Important Management Point

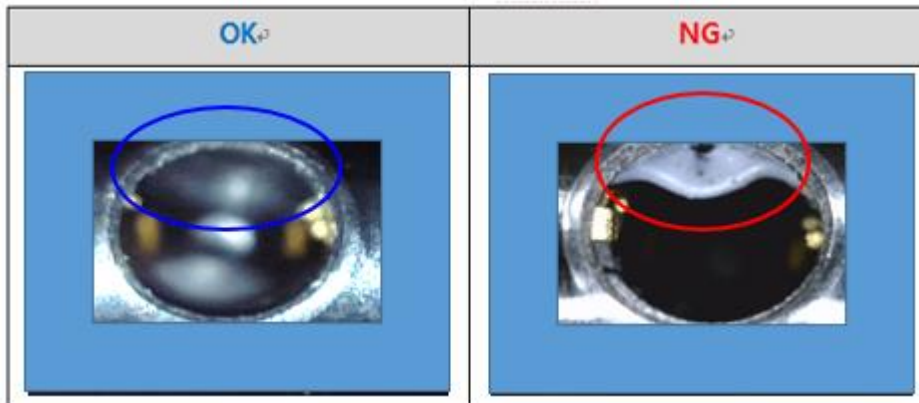
Earjack

■ Problem

- Water resistance defect because of unstable assembly of the earjack

■ Caution

- Need visual inspection after assembly

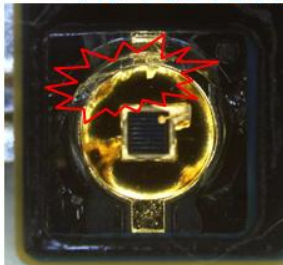


Important Management Point

Proximity Sensor

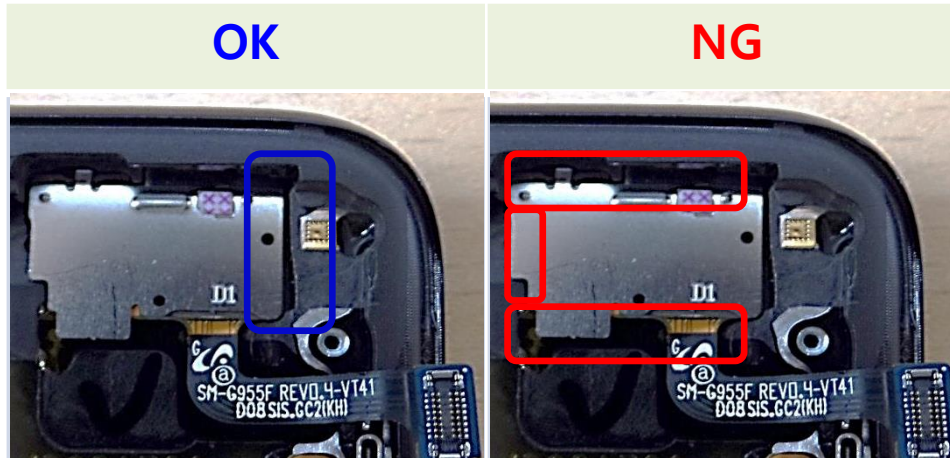
■ Problem

- Proximity Sensor defect during disassembly.



■ Caution

- Disassemble the sensor from the right side.



Important Management Point

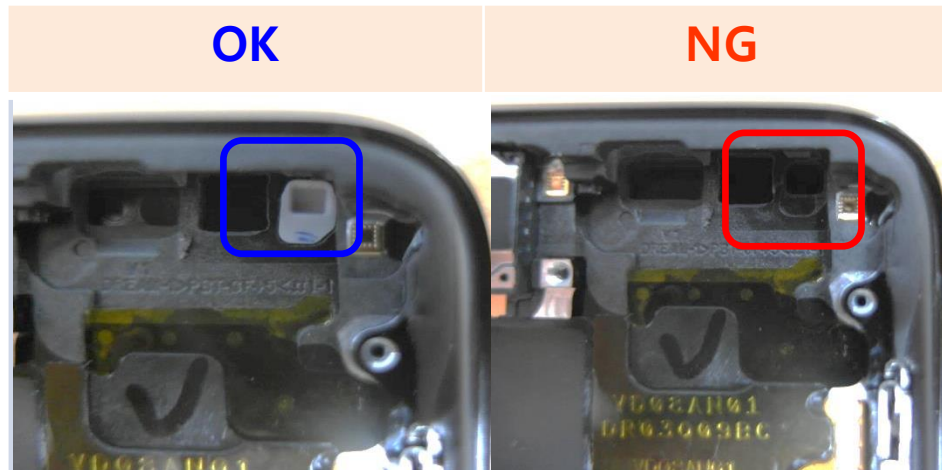
SVC LED

■ Problem

- Bright SVC LED

■ Caution

- Need to check LED rubber status before assembly of the sensor.

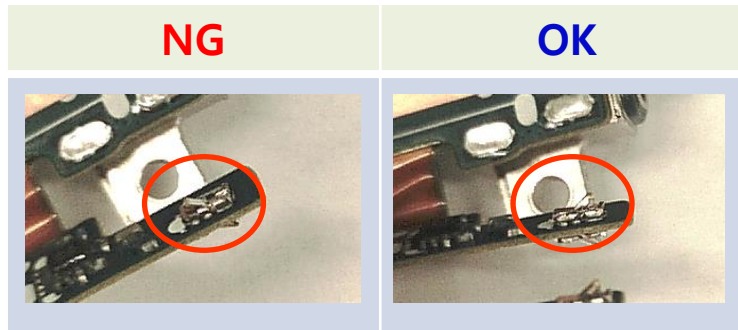


Important Management Point

Grip sensor

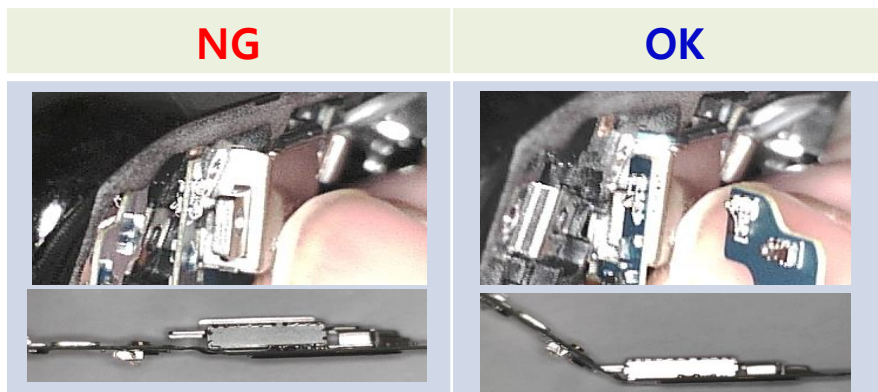
■ Problem

- Deformation of C-clip.



■ Caution

- Bend F-PCB on Z axis before assembling SUB PBA to prevent interfere of C-clip



Important Management Point

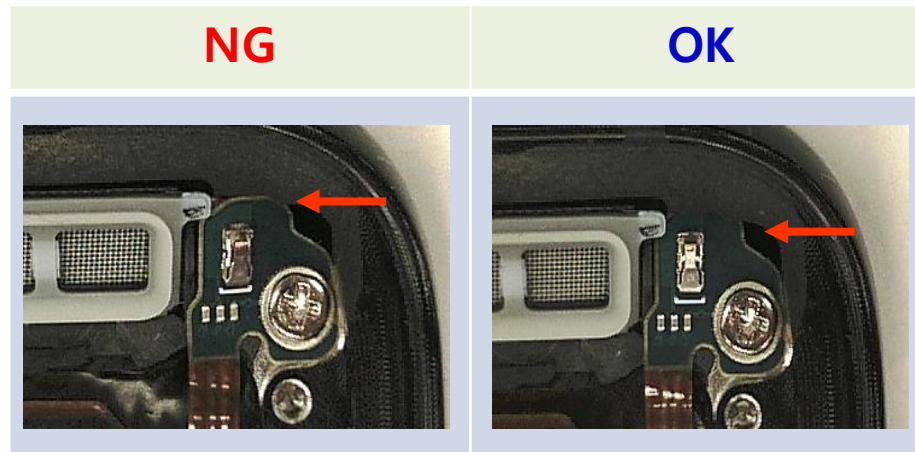
Sub PBA

■ Problem

- Damage of Sub PBA

■ Caution

- Be careful when assembling the subpba
 - ☞ Insert the sub PBA into the hole.



Important Management Point

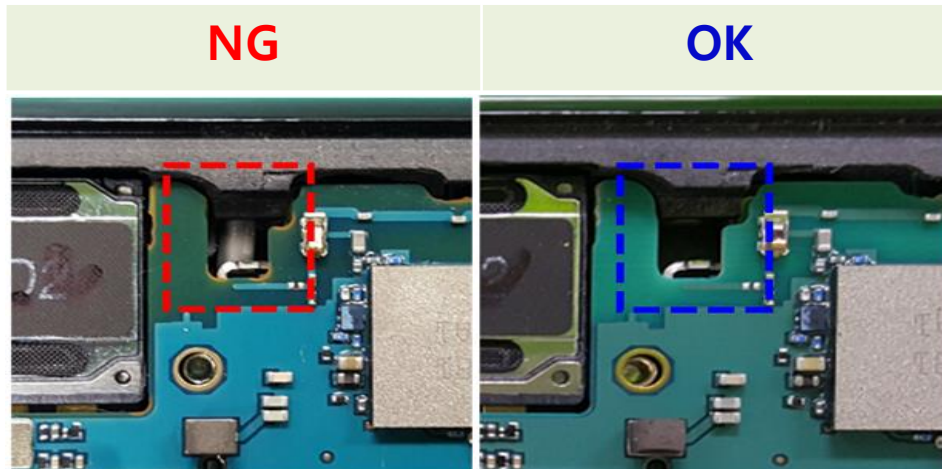
SIM Tray

■ Problem

- Lifted SIM tray and abnormal operation

■ Caution

- Need to check SIM pin status, before assembling of front and PBA.



Important Management Point

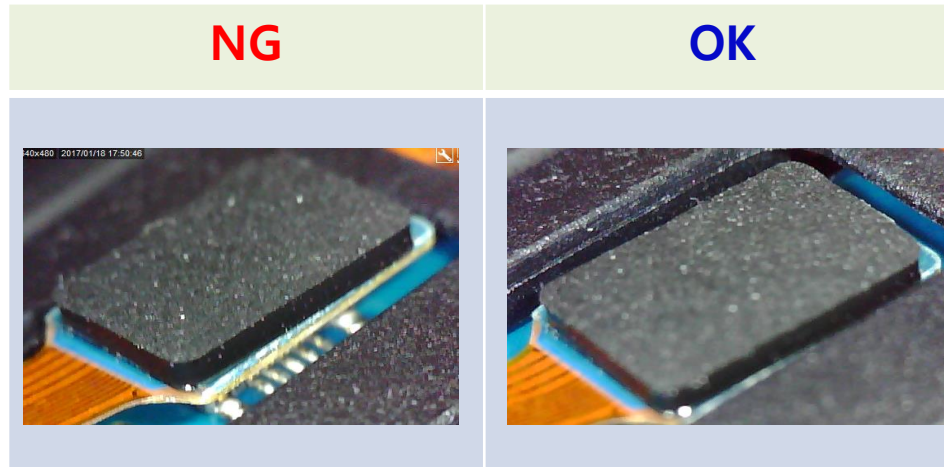
Finger print

■ Problem

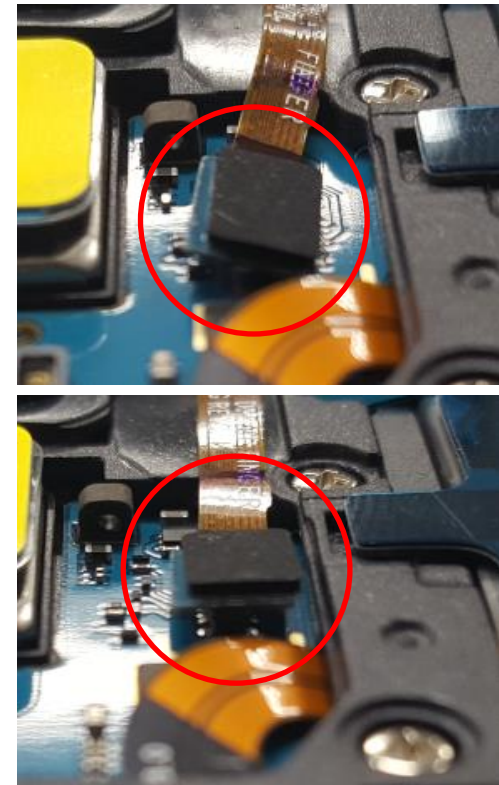
- Malfunction of finger print.
 - ↳ Lifted F-PCB connector.

■ Caution

- Need visual inspection after assembly



Abnormal connection



Important Management Point

PBA (Speaker C-Clip)

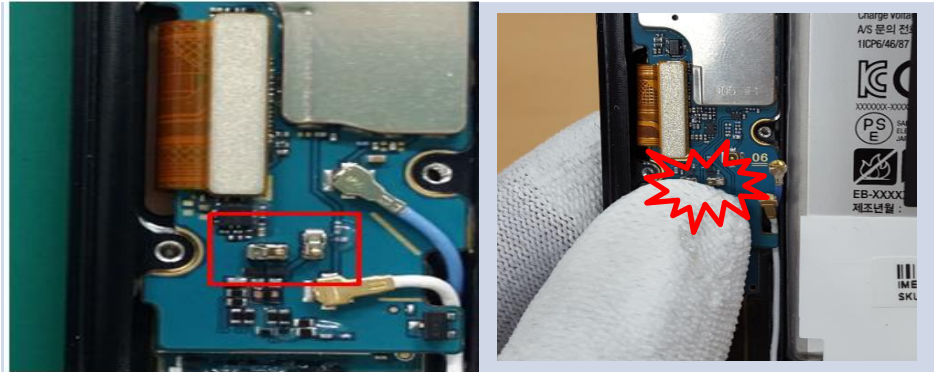
■ Problem

- Malfunction of the speaker
 - ↳ Damage of C-Clip during sub pba assembly.

■ Caution

- Be careful when assembling coaxial cable.

Be careful of C-Clip damage

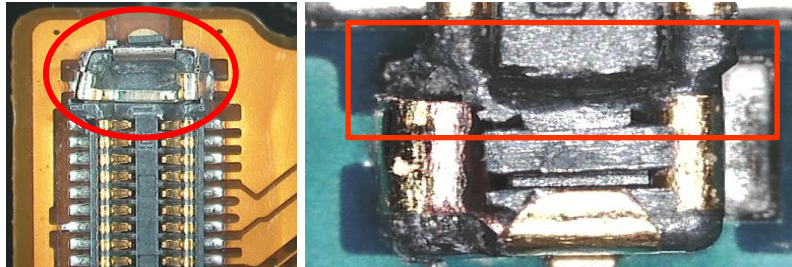


Important Management Point

Display

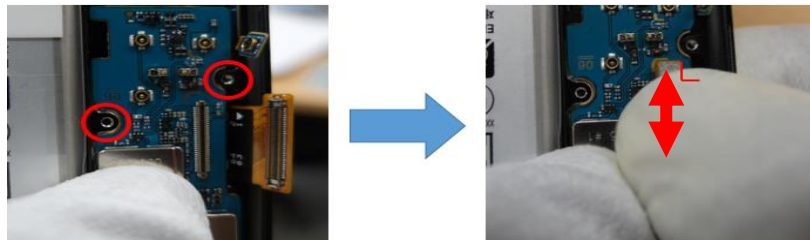
■ Problem

- Blank display
- 👉 Connector mold damage.



■ Caution

- Holding the device by rotating 180 degrees
- Assemble the main PBA based on screw boss hole
- Push the LCD connector after confirmation that the connector does not move.



Important Management Point

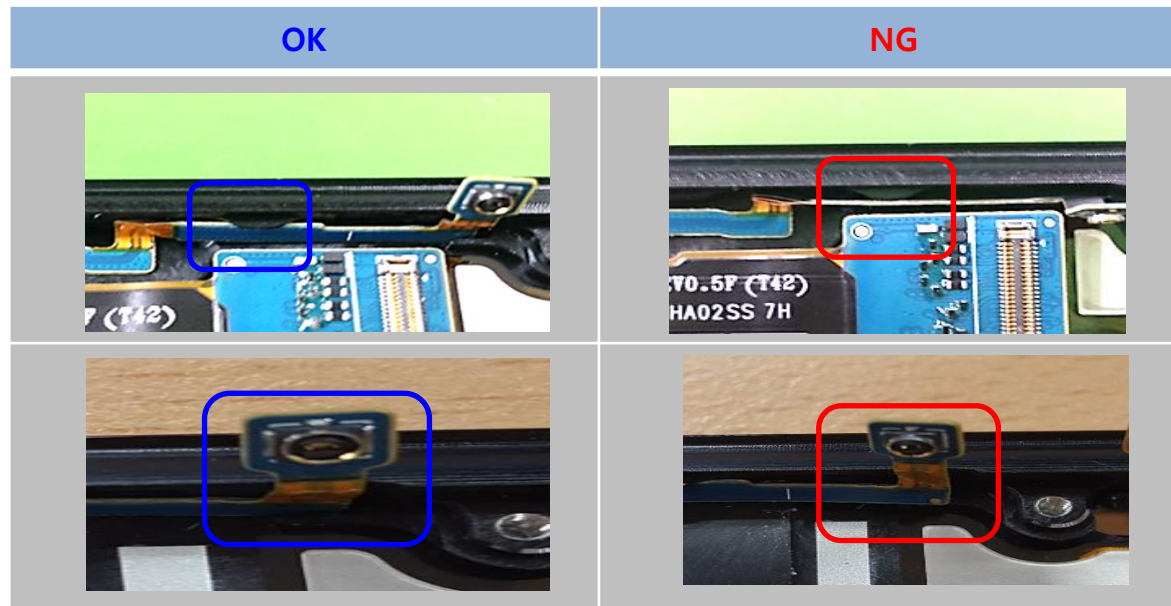
Sub PBA

■ Problem

- 3D F-PCB damage when assembling speaker / PBA.

■ Caution

- 3D F-PCB should be assembled inside of the bracket hook.



Important Management Point

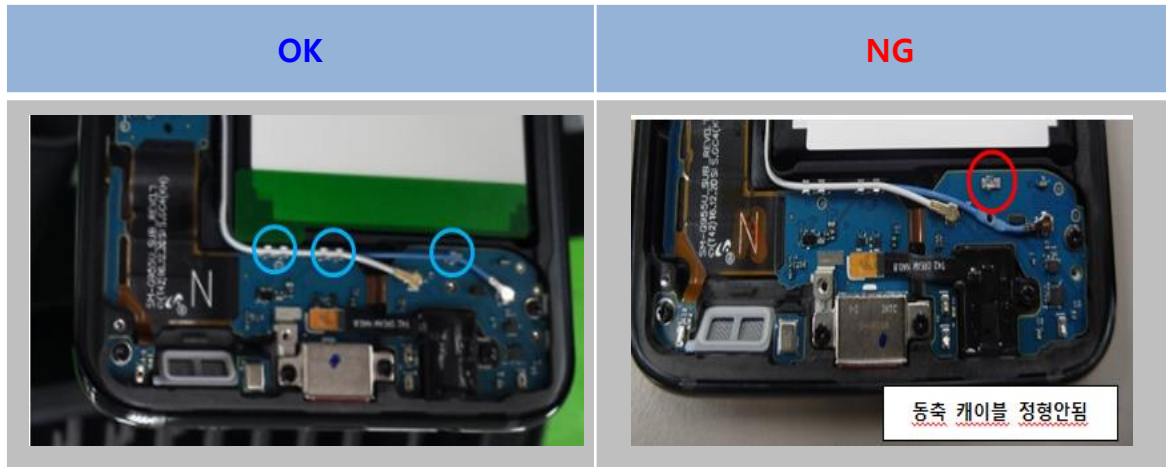
Coaxial Cable

■ Problem

- Lifted speaker, Leakage current.

■ Caution

- Coaxial cable should be arranged inside of the clip.



Important Management Point

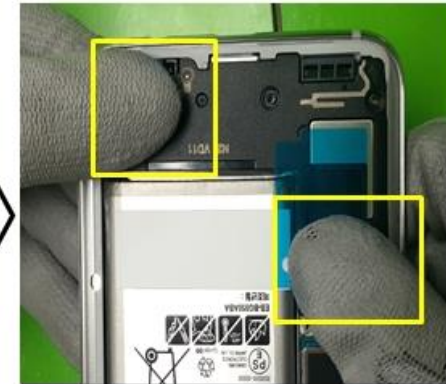
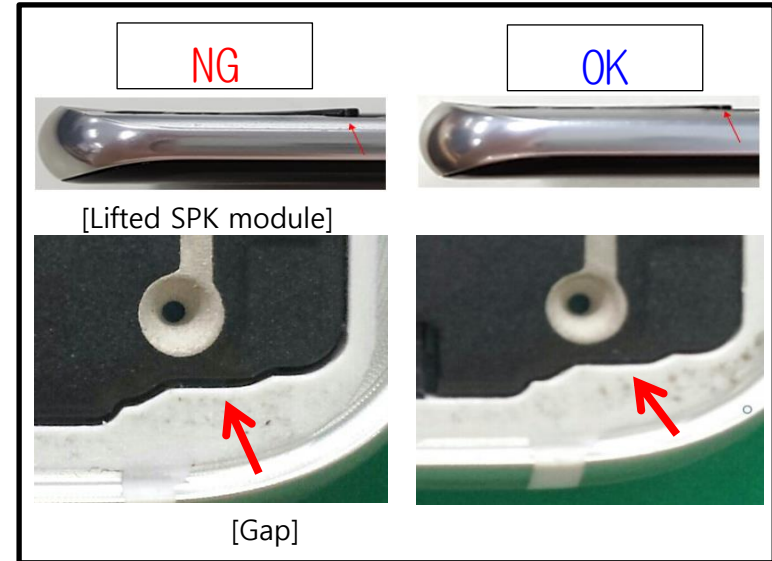
Speaker

■ Problem

- Speaker deform or water resistance fail.

■ Caution

- Assemble 4 hooks by pushing upside.
- Assemble side hook by pushing left side.
- Press 2 points.



Important Management Point

Speaker

■ Problem

- Speaker deform or water resistance fail.

■ Caution

- Need visual inspection after assembly



Important Management Point

NFC

■ Problem

- Wireless charging defect

■ Caution

- Need visual inspection after assembly.
 - ☞ Antenna F-PCB should be placed on the module.



Important Management Point

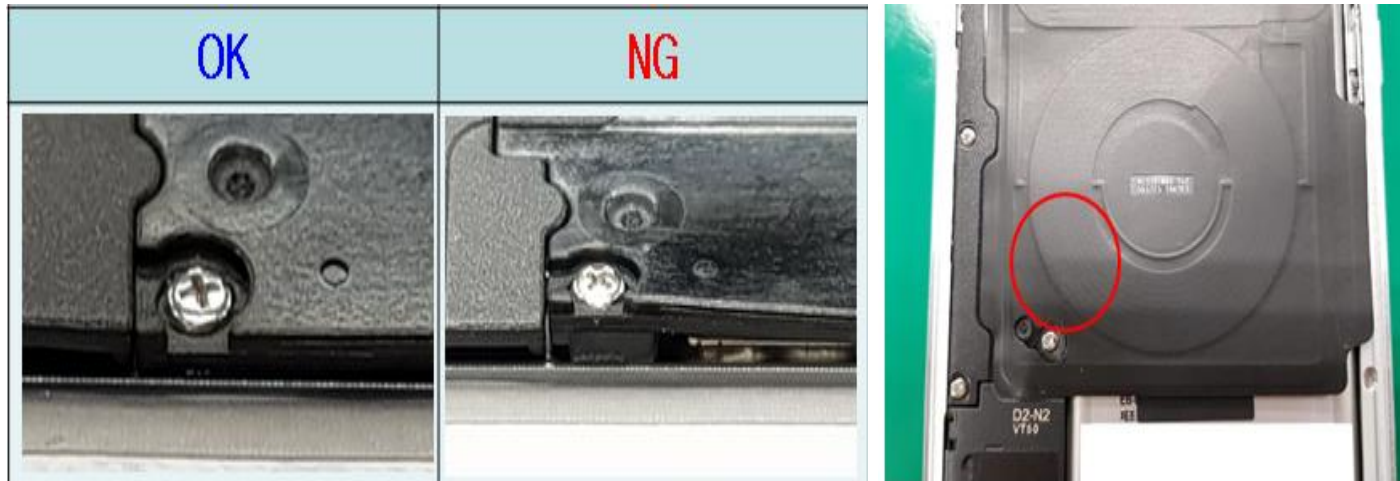
NFC

■ Problem

- Lifted backglass. Water resistance defect.

■ Caution

- Press designated area and need visual inspection.



Important Management Point

Antenna

■ Problem

- Lifted antenna. Water resistance defect.

■ Caution

- Press from the left side to the right side.



Important Management Point

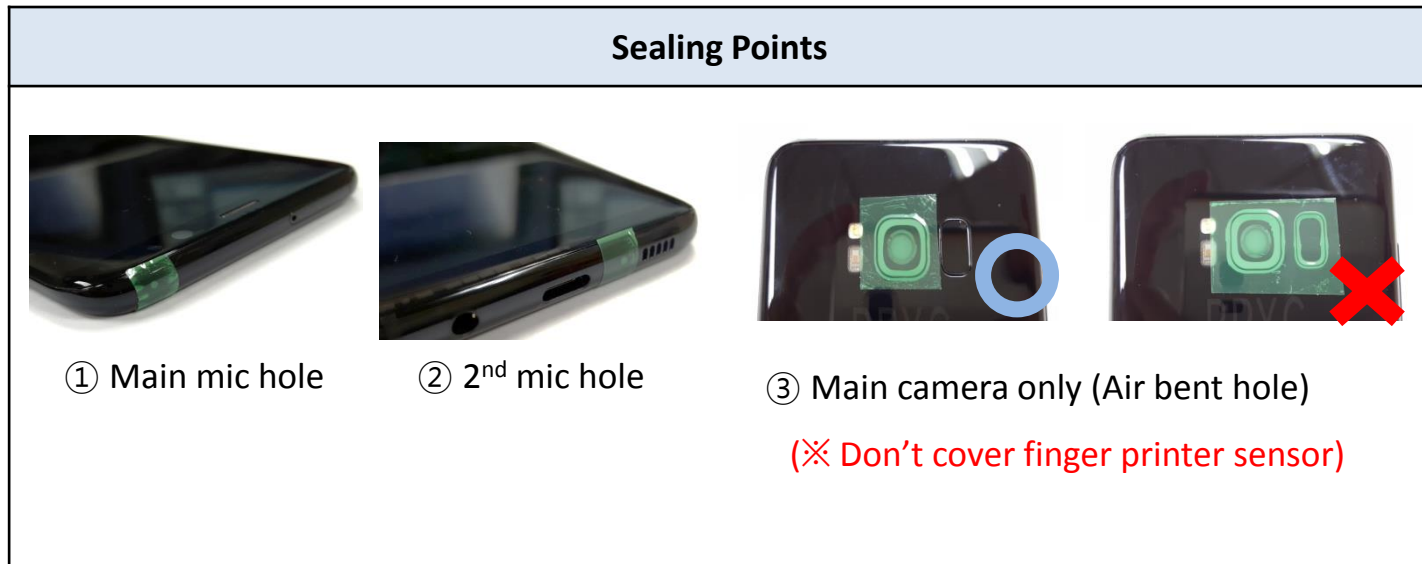
Water Resistance

■ Problem

- Can't ensure Water resistance after testing.

■ Caution

- Need to follow sealing point. (Don't cover finger printer sensor)





Copyright © 2014 Samsung Electronics

This guide is protected under international copyright laws.

No part of this guide may be reproduced, distributed, translated, or transmitted in any form or by any means, electronic or mechanical, including photocopying, recording, or storing in any information storage and retrieval system, without the prior written permission of Samsung Electronics.