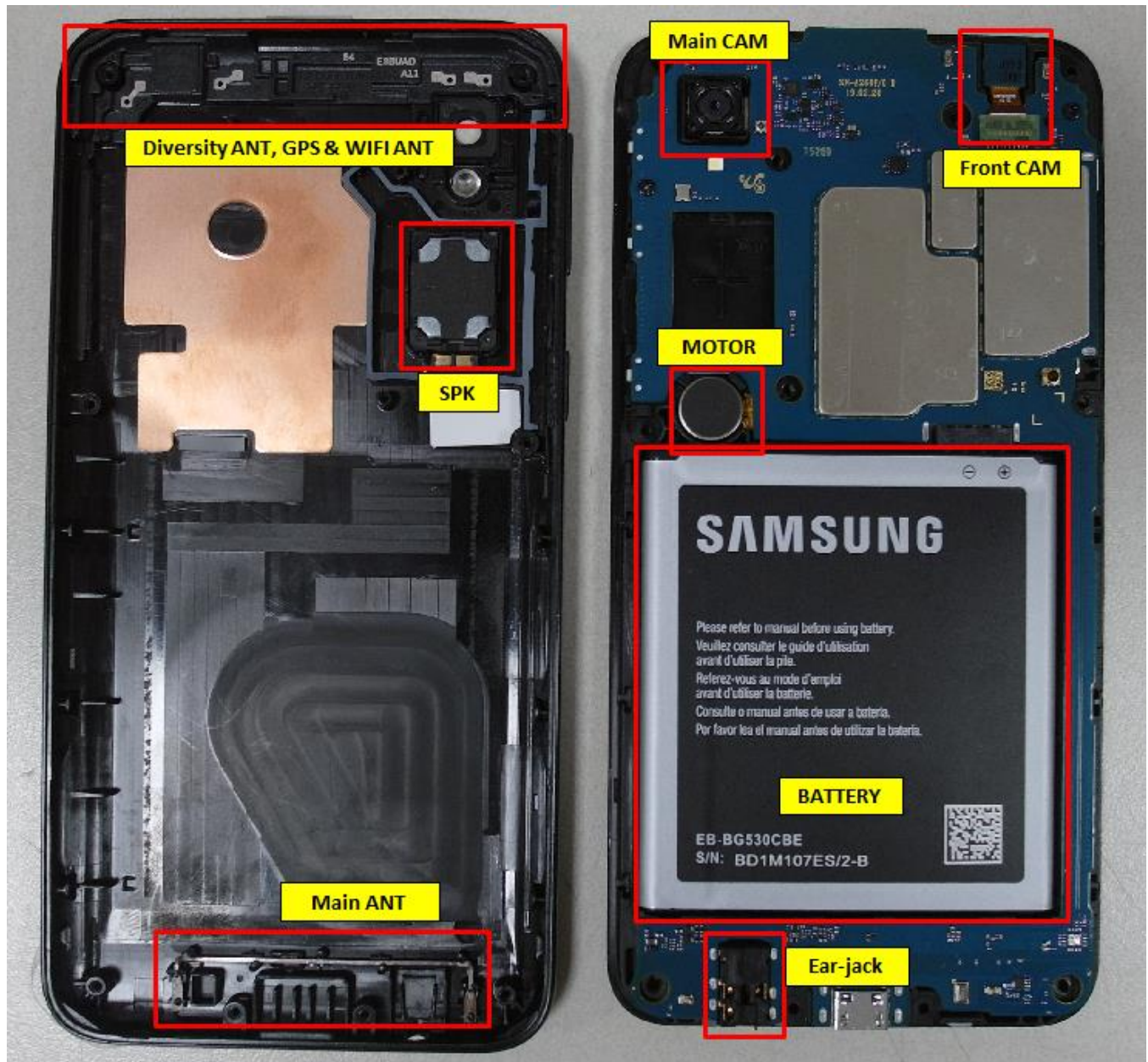


---

## 7. Level 2 Repair

---

### 7-1. Components on the Rear Case



## 7. Level 2 Repair

### 7-2. Pre-requisite


	
<b>Tweezers / Disass'y Stick / Screw Driver</b>	<b>Anti-static Gloves</b>
	
<b>Anti-static Mat</b>	<b>Hot Plate</b>
	
<b>A OCTA Disassembly Holder</b>	<b>OCTA Disassembly Upper</b>
	
<b>Ethyl Alcohol</b>	<b>Cotton Swab</b>

---

## 7. Level 2 Repair




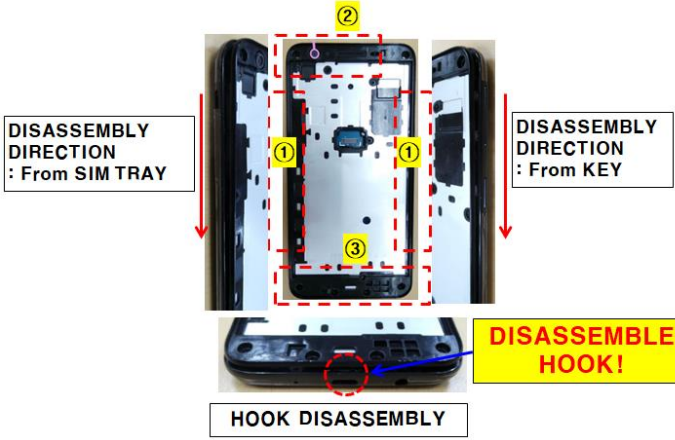
---

### 7-3. Parts which must be changed after repair

BOM description & part code	Image	Remarks
<p>Window rework tape</p> <p>[GH81-16930A]</p>		<p>Replace for LCD (LCD side tape)</p>

## 7. Level 2 Repair

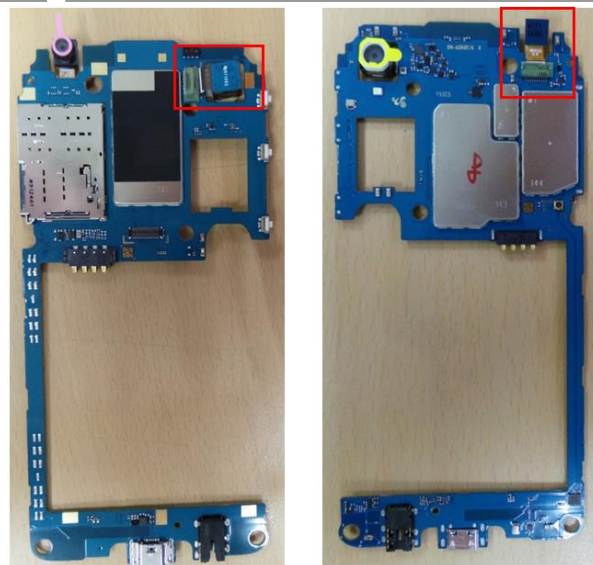
### 7-4. Disassembly

<div data-bbox="113 304 188 360">1</div> <div data-bbox="236 309 727 427">1) Place in high temperature chamber for 10 minute. 2) Separate TSP/LCD Assay using Vacuum jig.</div> <div data-bbox="134 501 750 801"></div>	<div data-bbox="807 304 882 360">2</div> <div data-bbox="919 309 1366 360">Separate the LCD connector cap and connector.</div> <div data-bbox="935 427 1362 864"></div> <div data-bbox="1023 864 1278 898">[LCD Connector cap]</div>
<div data-bbox="108 1010 244 1037">※ Caution</div> <div data-bbox="108 1039 675 1106">1) Before disassembling, Use heating chamber. 2) Be care of scratch and molding damage.</div>	<div data-bbox="807 1010 943 1037">※ Caution</div> <div data-bbox="807 1039 1318 1106">1) Be care of scratch and molding damage. 2) Be care of damage to the LCD FPCB.</div>
<div data-bbox="113 1126 188 1182">3</div> <div data-bbox="236 1131 560 1198">Unscrew the 11 points. Remove SIM tray from set.</div> <div data-bbox="301 1276 580 1798"></div>	<div data-bbox="807 1126 882 1182">4</div> <div data-bbox="919 1131 1422 1256">Use disassembly tool to disassemble all hooks. After disassemble all hooks, disassemble rear cover from top to bottom.</div> <div data-bbox="807 1346 1485 1783"></div>
<div data-bbox="108 1910 244 1937">※ Caution</div> <div data-bbox="108 1939 592 1973">Be care of scratch and molding damage.</div>	<div data-bbox="807 1883 943 1910">※ Caution</div> <div data-bbox="807 1912 1477 2002">1) Be care of scratch and molding damage. 2) <b>Disassemble all hooks before rear cover disassembly.</b> 3) Use disassembly tool that is used commonly.</div>



## 7. Level 2 Repair

Unscrew the 3 points and disassemble PBA from BRK Ass'y.



### ※ Caution

- 1) Be care of Bracket damage.
- 2) Be care of PBA damage.

### ※ Caution

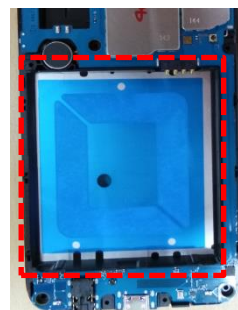
Be care of FPCB damage and PBA damage.

8

Incase of battery disassembly, use high temperature chamber.(75', 10 minutes.) Attach new 'TAPE DOUBLE FACE-BATTERY' on BRK.



[Insert disassembly knife at the gap between battery and BRK for disassembly.]



[Tape double face-battery]

### ※ Caution

Be care of scratch, molding damage.

### ※ Caution

- 1) Be care of BRK damage.
- 2) Remove all old 'tape double face-battery' before change it to new one.

## 7. Level 2 Repair

### 7-5. Assembly

<div data-bbox="119 302 766 369"> <div>1</div> <div>Assemble RCV, Motor, SPK module.</div> </div> <div data-bbox="151 436 742 985"> </div>	<div data-bbox="821 302 1476 369"> <div>2</div> <div>Assemble the VT, MEGA Camera on PBA.</div> </div> <div data-bbox="853 380 1460 940"> </div>
<div>※ Caution</div> <div>Be care of damage to the part</div>	<div>※ Caution</div> <div>Be care of damage to the part and it's FPCB</div>
<div data-bbox="119 1086 766 1176"> <div></div> <div></div> </div> <div data-bbox="311 1198 718 1243"> <div>Attention : Guide line for tape.</div> </div> <div data-bbox="183 1243 718 1545"> </div> <div data-bbox="183 1556 718 1624"> <div>Assemble 'MAIN CAM' and attach tape. : Accord the end of enhanced area.</div> </div> <div data-bbox="279 1635 614 1848"> </div> <div data-bbox="295 1848 582 1915"> <div>Assemble SUB CAM and attach TAPE.</div> </div>	<div data-bbox="821 1086 1476 1254"> <div>4</div> <div>Assemble PBA and screw 3 points. : <math>1.0 \pm 0.1</math> Kgf/cm<sup>2</sup>. (1.4*2.3, 6001-001460) Check whether all battery contacts are contacted well.</div> </div> <div data-bbox="1061 1265 1252 1579"> </div> <div data-bbox="1061 1568 1252 1601"> <div>[Screw 3 points]</div> </div> <div data-bbox="965 1635 1348 1859"> </div> <div data-bbox="1021 1848 1300 1892"> <div>[Battery contact check]</div> </div>
<div>※ Caution</div> <div>Be care of PBA damage.</div>	<div>※ Caution</div> <div>Be care of dame of PBA and other components.</div>

## 7. Level 2 Repair

5

### In case of battery change,

- 1) Attach new 'tape double face battery' on BRK.  
: Keep inclined status for assembly.
- 2) Attach new battery on BRK.  
: Keep inclined status for assembly.
- 3) Press battery by using press jig.  
: Pressing time – 5sec  
Compression – 5.0 ~ 6.0 kgf/cm<sup>2</sup>  
(Target 3.0 kgf/cm<sup>2</sup>)



[Keep inclined status for assembly]



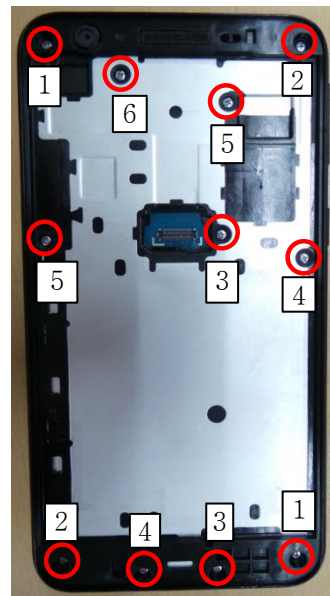
[Battery direction]

### ※ Caution

Press the 10 hooks for fasten.

6

- 1) Assemble rear cover from bottom to top.  
: All hooks should be assembled.
- 2) Screw 11 points of the Rear  
: 1.1 ± 0.1 Kgf/cm<sup>2</sup>. (1.6\*3.7, 6002-001631)
- 3) Check key tension of Vol and PWR key.

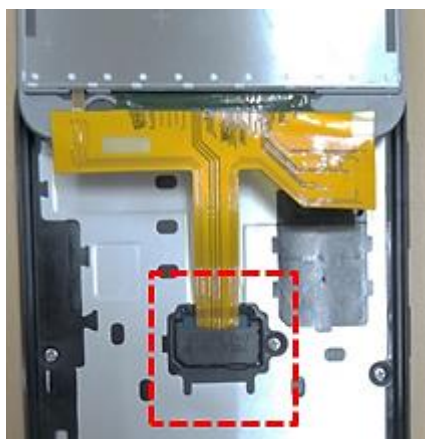


### ※ Caution

Be care of scratch and molding damage

7

Connect LCD Ass'y and LCD Cap.



[LCD Connector cap]

### ※ Caution

Be care of LCD FPCB damage.

8

Remove protective vinyl on 'tape double face-window and attach LCD from top to bottom.



[Tape double face - window]

### ※ Caution

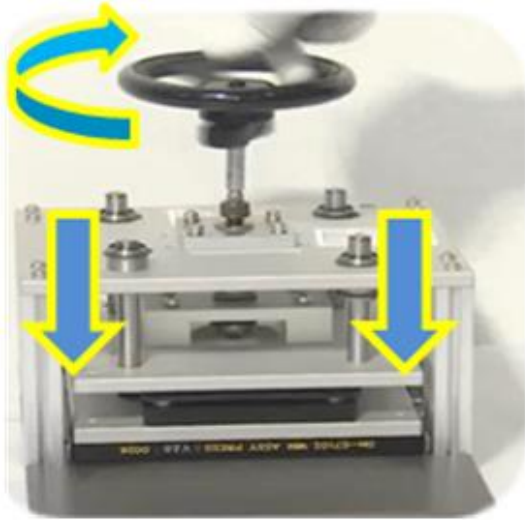
There should be misalignment between LCD and BRK.



## 7. Level 2 Repair

9

Press the set 2 times by using pressing jig.



[Pressing jig]

※ **Caution**

- Torque : 1N
- Press time : 1 minute